



WHITHAM
PLANNING DESIGN LANDSCAPE ARCHITECTURE, PLLC

WILLOW ISLAND - PHASE 1

MAIN STREET
CANTON, NEW YORK, 13617



60% DESIGN DEVELOPMENT SET

SUBMISSION DATE: 08/06/2023



**Department
of State**

PRELIMINARY - NOT FOR CONSTRUCTION

LANDSCAPE ARCHITECT: WHITHAM PLANNING DESIGN LANDSCAPE ARCHITECTURE PLLC 142 EAST STATE STREET SUITE B ITHACA NY 14850 607.272.1290 admin@whithamdesign.com	SEAL:				OWNER: VILLAGE OF CANTON NY 60 MAIN STREET CANTON, NY 13617 315.386.2871 www.cantonny.gov
ELECTRICAL ENGINEER: RAM-TECH ENGINEERS, P.C. 6100 FAIRWAY DRIVE SYRACUSE NY 13211 315.463.7716 www.ramtechengineers.com	SEAL:				
SHEET LIST: LANDSCAPE ARCHITECTURE L-000 - COVER SHEET L-001 - LEGENDS & ABBREVIATIONS L-002 - GENERAL NOTES L-100 - EXISTING CONDITIONS PLAN L-101 - DEMOLITION PLAN L-200 - GRADING PLAN L-201 - LAYOUT & MATERIALS PLAN L-300 - E&SC DETAILS L-301 - LANDSCAPE DETAILS 1 ELECTRICAL ES100 - ELECTRICAL SITE PLAN ES500 - SCHEDULE & DETAILS					

TEMPORARY E&SC PLAN LEGEND	
	INLET PROTECTION
	SILT FENCE / COMPOST SOCK
	CONSTRUCTION ENTRANCE
	EROSION CONTROL BLANKET
	CHECK DAM
	CONCRETE WASHOUT STATION
	COFFER DAM
	DE-WATERING PUMP (SUMP-PIT)

TEMPORARY SITE PROTECTION PLAN LEGEND	
	CONSTRUCTION SITE SECURITY FENCE
	TREE PROTECTION
	CONSTRUCTION STAGING AREA
	STOCKPILE AREA
	TRAFFIC CONTROL CONE

DEMOLITION PLAN LEGEND	
	ASPHALT REMOVAL
	CONCRETE REMOVAL
	BUILDING REMOVAL
	GRAVEL/SAND REMOVAL
	TREE REMOVAL
	AREA VEGETATION REMOVAL

LAYOUT & MATERIALS PLAN LEGEND	
	ASPHALT PAVEMENT
	CONCRETE PAVEMENT
	UNIT PAVERS
	STONE DUST PAVEMENT

GRADING & DRAINAGE PLAN LEGEND	
	MAJOR CONTOUR
	MINOR CONTOUR
	SPOT ELEVATION
	SLOPE ARROW
	CATCH BASIN
	BOULDER RETAINING WALL
	UNDERGROUND DRAIN LINE
	PVC DRAIN CLEANOUT
	UNDERGROUND STORM SEWER
	STORM SEWER MANHOLE

AMENITIES PLAN LEGEND	
	LIGHT POLE
	WASTE / RECYCLING RECEPTACLE
	BENCH
	CAFE TABLE
	PICNIC TABLE
	BOLLARD
	BOLLARD LIGHT

PLANTING PLAN LEGEND	
	EXISTING TREE/SHRUB
	LARGE TREE
	ORNAMENTAL TREE
	SHRUB
	PERENNIAL
	MEADOW
	PERENNIALS
	LAWN

ABBREVIATIONS (LANDSCAPE ARCH)	
@	AT
&	AND
ALT.	ALTERNATE
APPROX.	APPROXIMATELY
ARCH.	ARCHITECTURE (OR) ARCHITECT
B&B	BALLED & BURLAPPED
BOB (OR) BB	BOTTOM OF BANK
BOC (OR) BC	BOTTOM OF CURB
BOW (OR) BW	BOTTOM OF WALL
CAL.	CALIPER
CB	CATCH BASIN
CL	CENTER LINE
CONC.	CONCRETE
CONT.	CONTAINER (OR) CONTINUE
DIA.	DIAMETER
DEMO.	DEMOLISH (OR) DEMOLITION
E&SC	EROSION AND SEDIMENT CONTROL
ELEV.	ELEVATION
EXIST.	EXISTING
EXP. JT.	EXPANSION JOINT
FIN	FINISHED
FFE	FINISHED FLOOR ELEVATION
GAL.	GALLON
GALV.	GALVANIZED
HP	HIGH POINT
HT	HEIGHT
I.D.	INNER DIAMETER
ISO. JT.	ISOLATION JOINT
LA	LANDSCAPE ARCHITECT
LG	LARGE
LF	LINEAR FEET
LFF	LINEAR FACE FEET
LP (OR) LTP	LOW POINT (OR) LIGHT POLE
MAX.	MAXIMUM
MED.	MEDIUM
NO. (OR) #	NUMBER
NTS	NOT TO SCALE
N.I.C.	NOT IN CONTRACT
O.C.	ON CENTER
O.D.	OUTSIDE DIAMETER
OH	OVERHEAD
OHE	OVERHEAD ELECTRIC
P.O.B.	POINT OF BEGINNING
PL	PROPERTY LINE
PROP.	PROPOSED
PVMT.	PAVEMENT
QTY.	QUANTITY
R	RADIUS
SF	SQUARE FEET
SFF	SQUARE FACE FEET
SM. (OR) S	SMALL
SP	SPECIES
SPECS.	SPECIFICATIONS
SPR.	SPREAD
TOB (OR) TB	TOP OF BANK
TOC (OR) TC	TOP OF CURB
TOW (OR) TW	TOP OF WALL
TYP.	TYPICAL
VAR.	VARIETY (OR) VARRIES)
W	WITH
W/O	WITHOUT



Whitham
PLANNING DESIGN LANDSCAPE ARCHITECTURE, P.L.L.C.

142 East State Street, Suite B Ithaca NY 14850

PROGRESS PRINT
NOT FOR CONSTRUCTION OR BIDDING

SEAL
NOTICE: IT IS A VIOLATION OF LAW FOR ANY PERSON UNLESS ACTING UNDER THE DIRECTION OF A LICENSED LANDSCAPE ARCHITECT TO ALTER ANY ITEM ON THIS DOCUMENT. WHOEVER ALTERS THIS DOCUMENT IS REQUIRED BY LAW TO AFFIX HIS OR HER SEAL AND THE NOTATION "ALTERED BY" FOLLOWED BY HIS OR HER SIGNATURE AND A SPECIFIC DESCRIPTION OF ALTERATIONS.

COPYRIGHT © 2021
WHITHAM PLANNING DESIGN LANDSCAPE ARCHITECTURE, P.L.L.C.



Department of State

THIS DOCUMENT WAS PREPARED WITH FUNDING PROVIDED BY THE NEW YORK STATE DEPARTMENT OF STATE UNDER TITLE 11 OF THE ENVIRONMENTAL PROTECTION FUND.

WILLOW ISLAND
VILLAGE OF CANTON
MAIN STREET
CANTON, NEW YORK, 13617

LEGENDS & ABBREVIATIONS

N/A
SCALE

202214 PROJECT NO.	JvM DRAWN BY
2023.06.07 DATE	MP CHECKED BY

L-001

PROGRESS PRINT
NOT FOR CONSTRUCTION OR BIDDING

SEAL

NOTICE: IT IS A VIOLATION OF LAW FOR ANY PERSON UNLESS ACTING UNDER THE DIRECTION OF A LICENSED LANDSCAPE ARCHITECT TO ALTER ANY ITEM ON THIS DOCUMENT. WHOEVER ALTERS THIS DOCUMENT IS REQUIRED BY LAW TO AFFIX HIS OR HER SEAL AND THE NOTATION "ALTERED BY" FOLLOWED BY HIS OR HER SIGNATURE AND A SPECIFIC DESCRIPTION OF ALTERATIONS.

COPYRIGHT © 2021
WHITHAM PLANNING DESIGN LANDSCAPE ARCHITECTURE PLLC



Department of State

THIS DOCUMENT WAS PREPARED WITH FUNDING PROVIDED BY THE NEW YORK STATE DEPARTMENT OF STATE UNDER TITLE 11 OF THE ENVIRONMENTAL PROTECTION FUND.

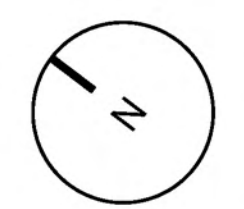
WILLOW ISLAND
VILLAGE OF CANTON
MAIN STREET
CANTON, NEW YORK, 13617

EXISTING CONDITIONS PLAN

1"=30'
SCALE

202214 PROJECT NO.	JvM DRAWN BY
2023.06.07 DATE	MP CHECKED BY

L-100



PROGRESS PRINT
NOT FOR CONSTRUCTION OR BIDDING

SEAL
NOTICE: IT IS A VIOLATION OF LAW FOR ANY PERSON UNLESS ACTING UNDER THE DIRECTION OF A LICENSED LANDSCAPE ARCHITECT TO ALTER ANY ITEM ON THIS DOCUMENT. WHOEVER ALTERS THIS DOCUMENT IS REQUIRED BY LAW TO AFFIX HIS OR HER SEAL AND THE NOTATION "ALTERED BY" FOLLOWED BY HIS OR HER SIGNATURE AND A SPECIFIC DESCRIPTION OF ALTERATIONS.



Department of State

THIS DOCUMENT WAS PREPARED WITH FUNDING PROVIDED BY THE NEW YORK STATE DEPARTMENT OF STATE UNDER TITLE 11 OF THE ENVIRONMENTAL PROTECTION FUND.

WILLOW ISLAND
VILLAGE OF CANTON
MAIN STREET
CANTON, NEW YORK, 13617

DEMOLITION PLAN

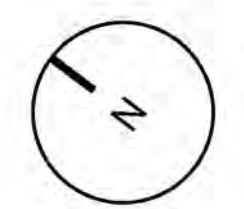
1"=30'
SCALE

202214 PROJECT NO.	JVM DRAWN BY
2023.06.07 DATE	MP CHECKED BY

L-101



DEMOLITION PLAN KEY NOTES	
1	REMOVE "W-BEAM" GUARD RAIL & DISPOSE OF OFF-SITE. FULLY REMOVE POST TO MIN. 12" BELOW FINISHED GRADE.
2	SALVAGE WOODEN "CANTON ISLAND PARK" SIGN AND SAFELY STOCKPILE FOR RELOCATION ON SITE.
3	REMOVE "2' MTL. BOLLARD" & DISPOSE OF OFF SITE. FULLY REMOVE POST TO MIN. 12" BELOW FINISHED GRADE. SALVAGE CHAIN FOR RE-USE ON SITE.
4	SALVAGE GRILL AND STOCKPILE FOR RE-USE ON SITE
5	SALVAGE BENCH ("IN MEMORY OF MIKE MARONEY BY LITA HOWIE MAURI AND VALLI") AND STOCKPILE SAFELY FOR RE-USE ON SITE. REMOVE CONCRETE SLAB TO A MIN. 6" BELOW FINISHED GRADE AND DISPOSE OF OFF-SITE.
6	REMOVE UTILITY POLE & ANY GUY WIRES. CONFIRM ALL ASSOCIATED / ATTACHED UTILITIES ARE ABANDONED AND INACTIVE PRIOR TO REMOVAL. REMOVE FULLY TO MIN. 12" BELOW FINISHED GRADE.
7	REMOVE ASPHALT TO FULL DEPTH, MIN 12" BELOW FINISHED GRADE. DISPOSE OFF SITE - OR - MILL FOR RE-USE ON SITE (RE-USED MILLINGS MUST MEET ASPHALT SPEC). SAW-CUT TO PROVIDE UNIFORM EDGE WHERE REMOVAL IS ADJACENT TO EXISTING PAVEMENT TO REMAIN.
8	MILL SURFACE OF ASPHALT PARKING AREA TO REMAIN
9	SALVAGE METAL "NO SWIMMING ALLOWED" SIGN AND SAFELY STOCKPILE FOR RELOCATION ON SITE.





WHITHAM
PLANNING DESIGN LANDSCAPE ARCHITECTURE, P.L.L.C.

142 East State Street Suite B Ithaca NY 14850

PROGRESS PRINT
NOT FOR CONSTRUCTION OR BIDDING

SEAL

NOTICE: IT IS A VIOLATION OF LAW FOR ANY PERSON UNLESS ACTING UNDER THE DIRECTION OF A LICENSED LANDSCAPE ARCHITECT TO ALTER ANY ITEM ON THIS DOCUMENT. WHOEVER ALTERS THIS DOCUMENT IS REQUIRED BY LAW TO AFFIX HIS OR HER SEAL AND THE NOTATION "ALTERED BY" FOLLOWED BY HIS OR HER SIGNATURE AND A SPECIFIC DESCRIPTION OF ALTERATIONS.

COPYRIGHT © 2023
WHITHAM PLANNING DESIGN LANDSCAPE ARCHITECTURE, P.L.L.C.



Department of State

THIS DOCUMENT WAS PREPARED WITH FUNDING PROVIDED BY THE NEW YORK STATE DEPARTMENT OF STATE UNDER TITLE 11 OF THE ENVIRONMENTAL PROTECTION FUND.

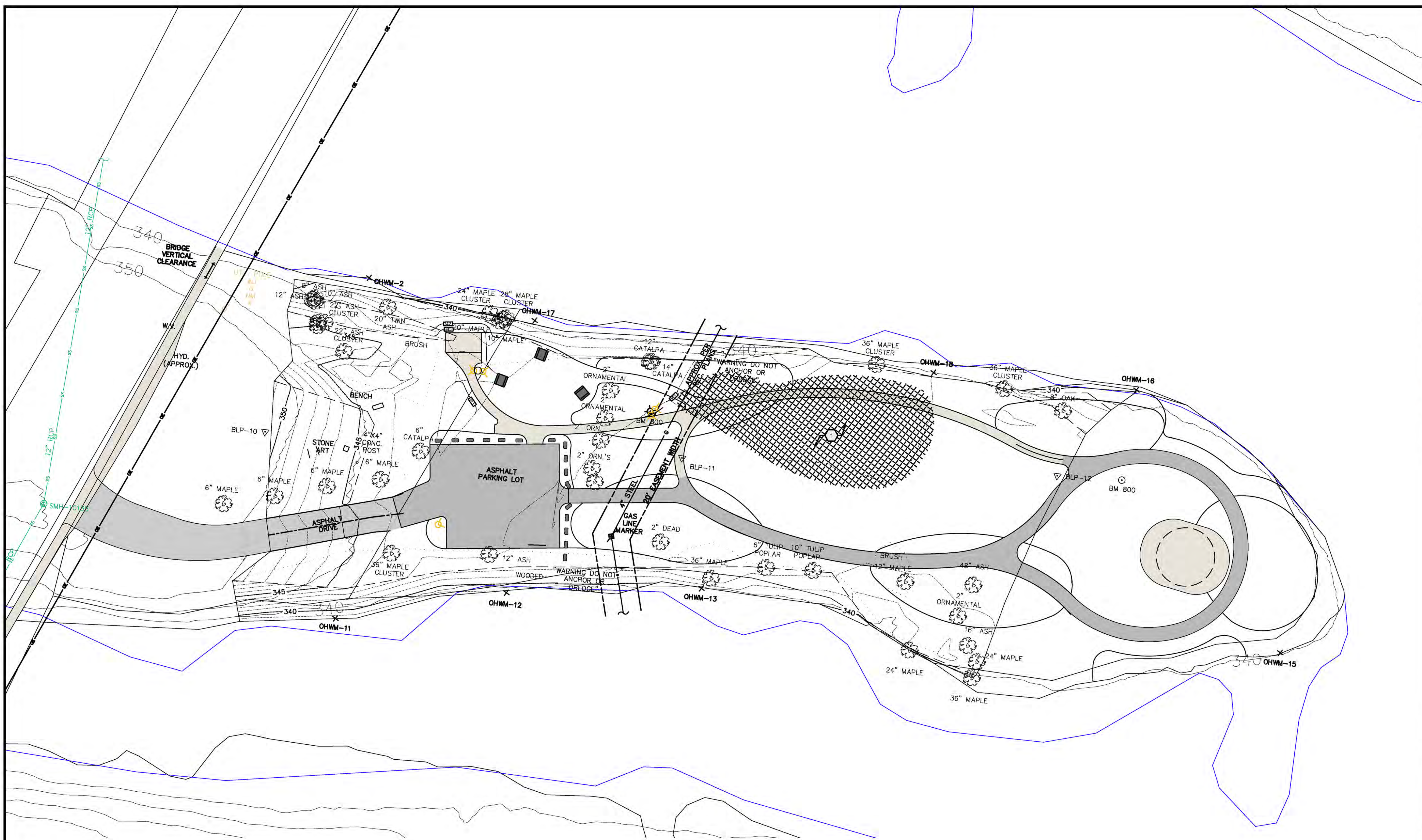
WILLOW ISLAND
VILLAGE OF CANTON
MAIN STREET
CANTON, NEW YORK, 13617

GRADING PLAN

1"=25'
SCALE

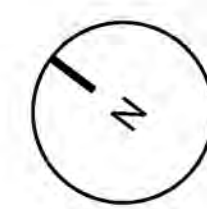
202214 PROJECT NO. JvM DRAWN BY
2023.06.07 DATE MP CHECKED BY

L-200



GRADING PLAN KEY NOTES	
1	LEVEL/REDUCE GRADE IN THIS AREA TO BALANCE FILL.
2	
3	
4	

5	
6	
7	
8	
9	





142 East State Street Suite B Ithaca NY 14850

PROGRESS PRINT
NOT FOR CONSTRUCTION OR BIDDING

SEAL
NOTICE: IT IS A VIOLATION OF LAW FOR ANY PERSON UNLESS ACTING UNDER THE DIRECTION OF A LICENSED LANDSCAPE ARCHITECT TO ALTER ANY ITEM ON THIS DOCUMENT. WHOEVER ALTERS THIS DOCUMENT IS REQUIRED BY LAW TO AFFIX HIS OR HER SEAL AND THE NOTATION "ALTERED BY" FOLLOWED BY HIS OR HER SIGNATURE AND A SPECIFIC DESCRIPTION OF ALTERATIONS.



Department of State

THIS DOCUMENT WAS PREPARED WITH FUNDING PROVIDED BY THE NEW YORK STATE DEPARTMENT OF STATE UNDER TITLE 11 OF THE ENVIRONMENTAL PROTECTION FUND.

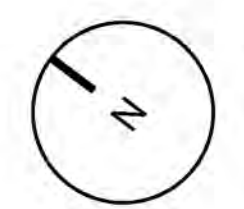
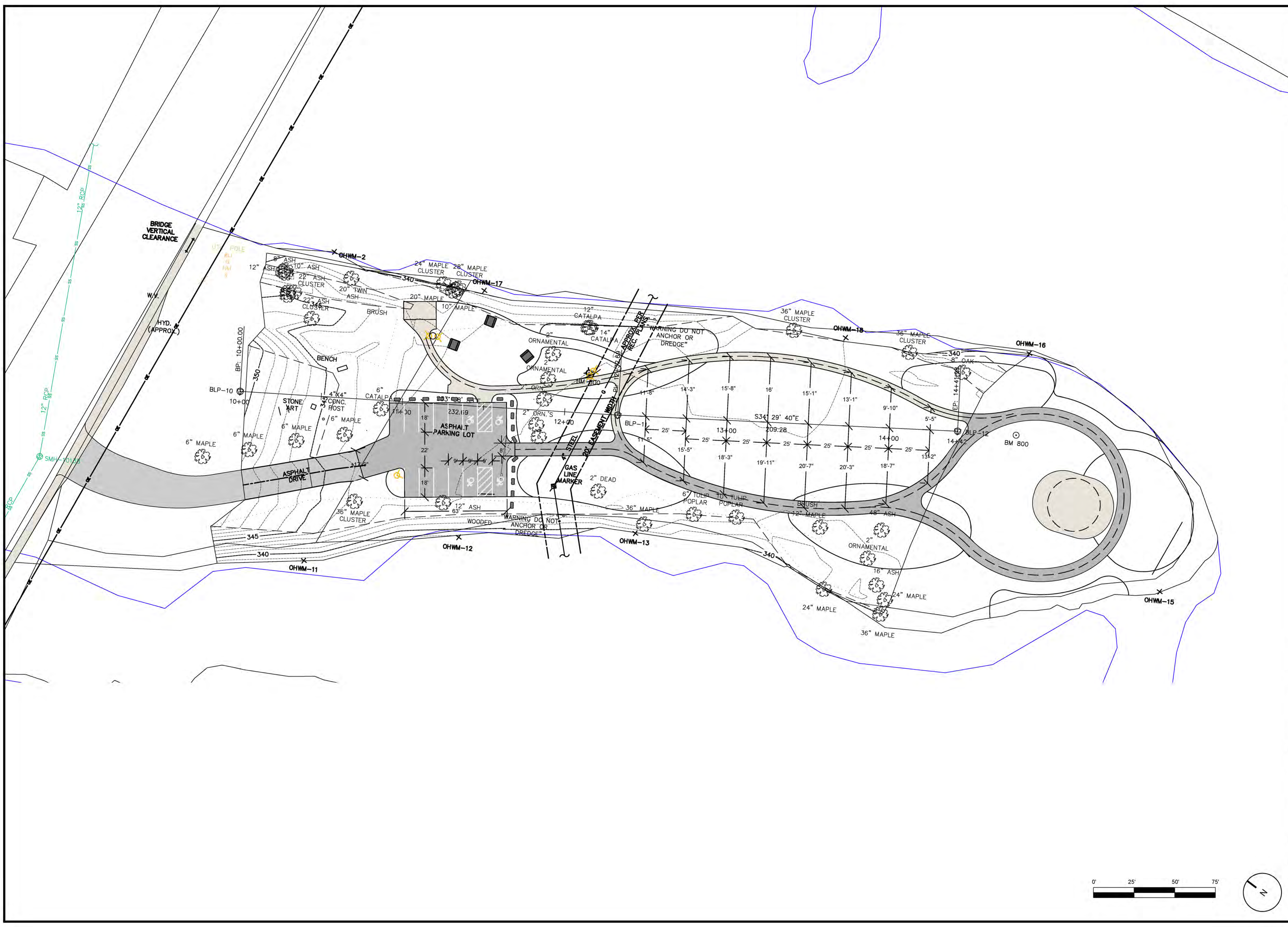
WILLOW ISLAND
VILLAGE OF CANTON
MAIN STREET
CANTON, NEW YORK, 13617

LAYOUT & MATERIALS PLAN

1"=25'
SCALE

202214 PROJECT NO.	JVM DRAWN BY
2023.06.07 DATE	MP CHECKED BY

L-201



PROGRESS PRINT
NOT FOR CONSTRUCTION OR BIDDING

SEAL
NOTICE: IT IS A VIOLATION OF LAW FOR ANY PERSON UNLESS ACTING UNDER THE DIRECTION OF A LICENSED LANDSCAPE ARCHITECT TO ALTER ANY ITEM ON THIS DOCUMENT. WHOEVER ALTERS THIS DOCUMENT IS REQUIRED BY LAW TO AFFIX HIS OR HER SEAL AND THE NOTATION "ALTERED BY" FOLLOWED BY HIS OR HER SIGNATURE AND A SPECIFIC DESCRIPTION OF ALTERATIONS.

COPYRIGHT © 2023
WHITHAM PLANNING DESIGN LANDSCAPE ARCHITECTURE, PLLC



Department of State

THIS DOCUMENT WAS PREPARED WITH FUNDING PROVIDED BY THE NEW YORK STATE DEPARTMENT OF STATE UNDER TITLE 11 OF THE ENVIRONMENTAL PROTECTION FUND.

WILLOW ISLAND
VILLAGE OF CANTON
MAIN STREET
CANTON, NEW YORK, 13617

PLANTING PLAN

1"=25'
SCALE

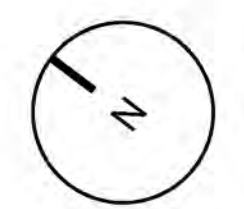
202214 PROJECT NO.	JVM DRAWN BY
2023.06.07 DATE	MP CHECKED BY

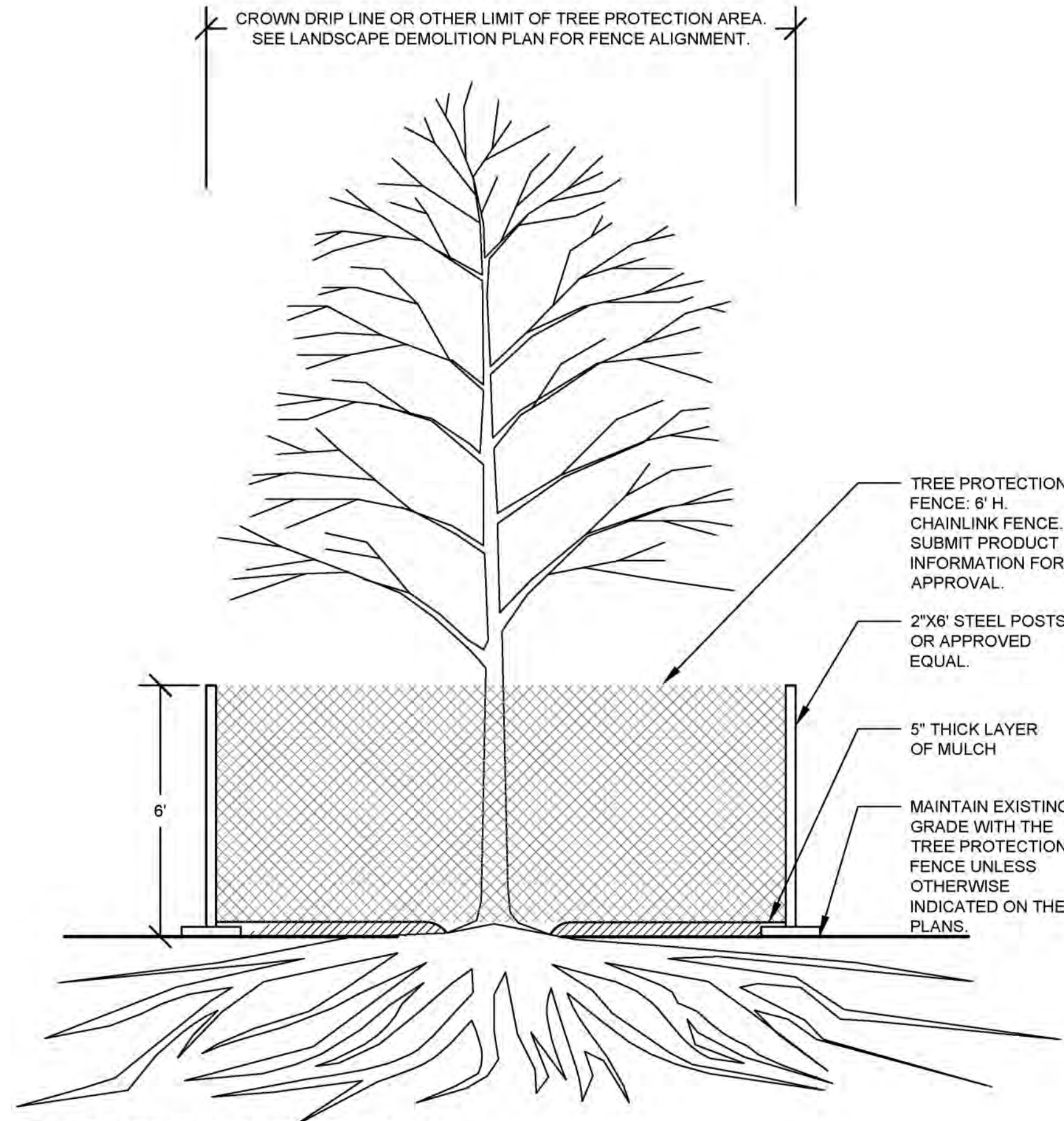
L-202



PROJECT PLANT SCHEDULE

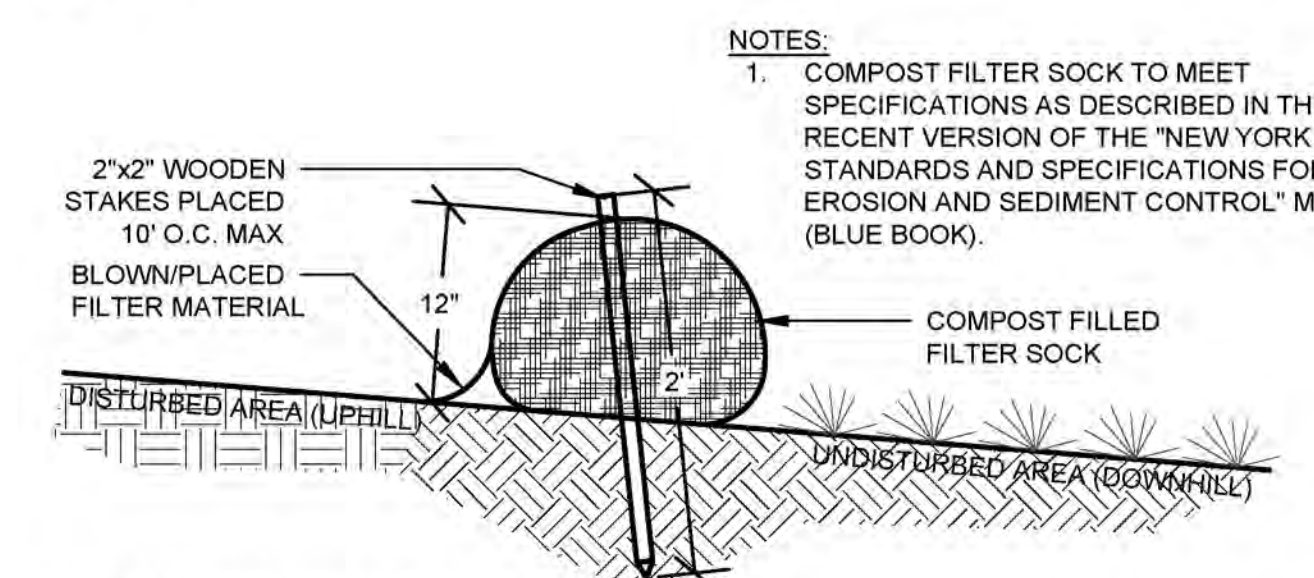
KEY	COUNT	SIZE	SCIENTIFIC NAME	COMMON NAME
Large Deciduous Trees				
APN			<i>Acer pennsylvanicum</i>	Moosewood/ Snakebark/Striped Maple
AR			<i>Acer rubrum</i>	Red Maple
AS			<i>Acer saccharum</i>	Sugar Maple
BAG			<i>Betula alleghaniensis</i>	Yellow Birch
BPY			<i>Betula papyrifera</i>	Paper Birch
FG			<i>Fagus grandifolia</i>	American Beech
LXL			<i>Larix laricina</i>	American Larch
LT			<i>Liriodendron tulipifera</i>	Tulip Tree
PRS			<i>Prunus serotina</i>	Black Cherry
QR			<i>Quercus rubra</i>	Red Oak
SXN			<i>Salix nigra</i>	Black Willow
TA			<i>Tilia americana</i>	Basswood
Small Deciduous Trees				
AC			<i>Amelanchier canadensis</i>	Shadblow/Serviceberry
AL			<i>Amelanchier laevis</i>	Allegheny Serviceberry
AMA			<i>Amelanchier arborea</i>	Serviceberry
Large Coniferous Trees				
Small Coniferous Trees & Shrubs				
Deciduous Shrubs				
Perennials				





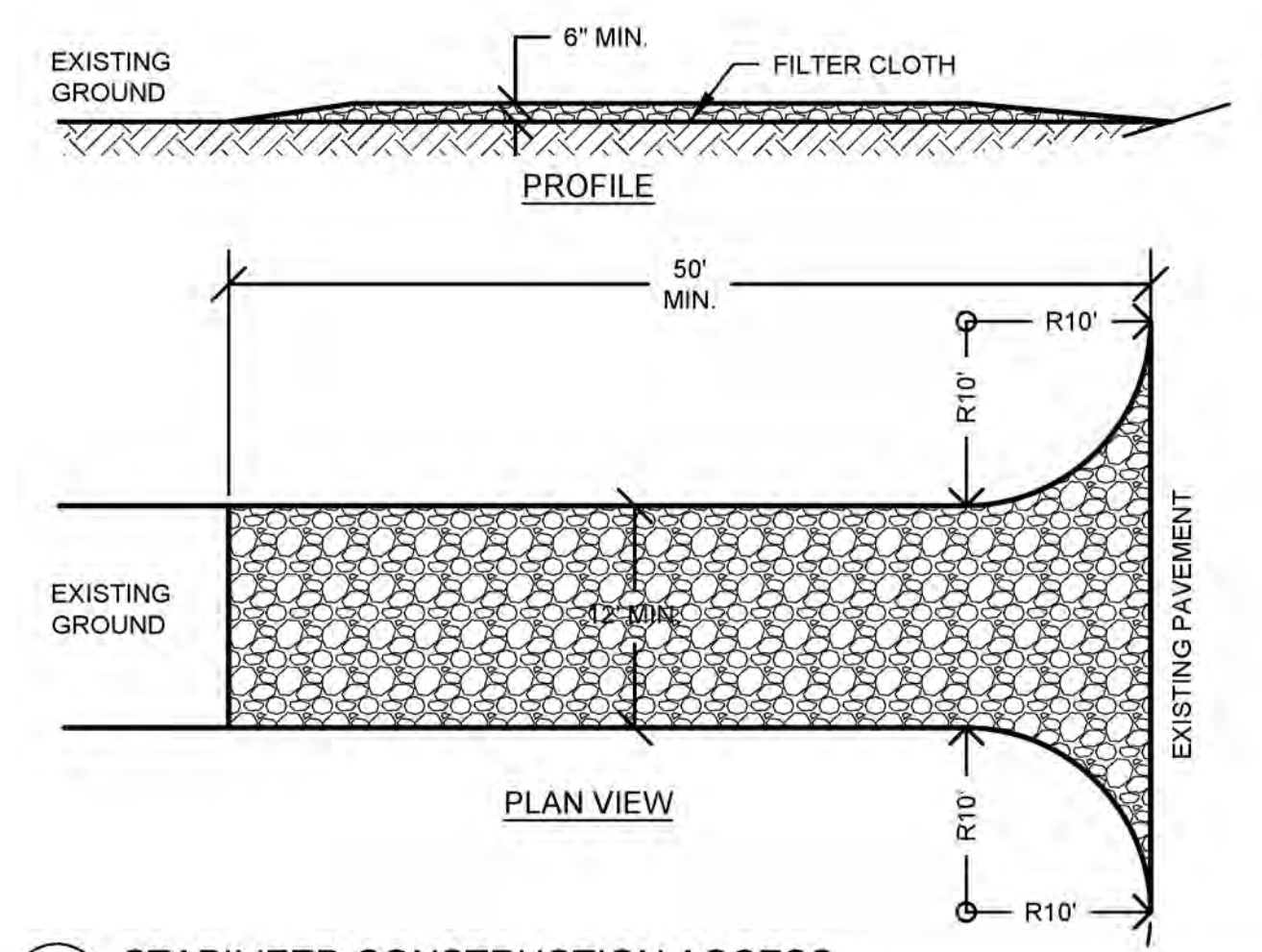
1 EXISTING TREE PROTECTION
NTS

- NOTES:**
- TREE PROTECTION AREA IS DEFINED AS PROTECTION BARRIERS SURROUNDING CROWN DRIP LINE OR CRITICAL ROOT ZONE (CRZ). CRZ IS DEFINED AS 1 FOOT OF RADIUS FOR EVERY INCH OF TRUNK DIAMETER AT BREAST HEIGHT (D.B.H.) SEE LANDSCAPE DEMOLITION PLAN FOR FENCE ALIGNMENT.
 - PRIOR TO ANY LAND DISTURBANCE, PROTECTION BARRIERS AS SHOWN, SHALL BE INSTALLED ALONG THE CROWN DRIP LINE OR CRZ OF ANY TREE OR ALONG THE LIMITS OF CLEARING AND GRADING OF ANY GROUP OF TREES, AS APPLICABLE, TO BE PRESERVED.
 - PROTECTIVE BARRIERS SHALL REMAIN INSTALLED THROUGHOUT ALL PHASES OF CONSTRUCTION, AND WILL ONLY BE REMOVED UPON CONSTRUCTION COMPLETION. SITE INSPECTION BY A CERTIFIED ARBORIST OR URBAN FORESTER IS RECOMMENDED TO CHECK EXISTING TREES FOR ANY DAMAGE CAUSED BY CONSTRUCTION, NO GRADE CHANGES OR STORAGE EQUIPMENT, MATERIALS, DEBRIS, OR FILL SHALL BE ALLOWED WITHIN THE AREA PROTECTED BY THE BARRIER. NO CONSTRUCTION TRAFFIC, PARKING OF VEHICLES, OR DISPOSAL OF LIQUIDS IS PERMITTED WITHIN THE TREE PROTECTION AREA.
 - FIVE INCHES OF MULCH IS TO BE APPLIED WITHIN TREE PROTECTION AREA PER ISA (INTERNATIONAL SOCIETY OF ARBORICULTURE) RECOMMENDATION, BEING SURE TO KEEP ALL MULCH CLEAR OF THE TRUNK FLARE.
 - TREE ROOTS THAT MUST BE SEVERED SHALL BE CUT BY A TRENCHER OR SIMILAR EQUIPMENT ALIGNED RADIIALLY TO THE TREE. THIS METHOD REDUCES THE LATERAL MOVEMENT OF THE ROOTS DURING EXCAVATION WHICH DONE BY OTHER METHODS COULD DAMAGE THE INTERTWINED ROOTS OF ADJACENT TREES. USE OF HEAVY EQUIPMENT SUCH AS A BACKHOE FOR TREE ROOT PRUNING SHALL BE PROHIBITED. THIS EFFORT SHALL TAKE PLACE AND BE COMPLETE PRIOR TO ANY LAND DISTURBANCE ACTIVITIES.
 - WITHIN FOUR HOURS OF ANY SEVERANCE OF ROOTS, ALL TREE ROOTS THAT HAVE BEEN EXPOSED AND/OR DAMAGED SHALL BE TRIMMED CLEANLY AND COVERED TEMPORARILY WITH MOIST PEAT MOSS, MOIST BURLAP, OR OTHER MOIST BIODEGRADABLE MATERIAL TO KEEP THEM FROM DRYING OUT UNTIL PERMANENT COVER CAN BE INSTALLED.
 - NO TOXIC MATERIALS, INCLUDING PETROLLEUM PRODUCTS, SHALL BE STORED WITHIN 100 FEET OF THE TREE PROTECTION AREA.
 - SEDIMENT RETENTION AND DETENTION BASINS SHALL NOT BE LOCATED WITHIN THE TREE PROTECTION AREA. SUCH BASINS SHALL NOT DISCHARGE DIRECTLY INTO THE TREE PROTECTION AREA UNLESS THE DISCHARGE IS TRANSITIONED BACK TO SHEET FLOW PRIOR TO ENTERING THE TREE PROTECTION AREA, OR IS DISCHARGED INTO AN ADEQUATE NATURAL CHANNEL.
 - FENCING AROUND TREES TO BE APPROVED BY LANDSCAPE ARCHITECT. INSPECTION OF FENCING TO BE INCLUDED IN REGULAR CONSTRUCTION INSPECTION BY PROJECT LEAD.



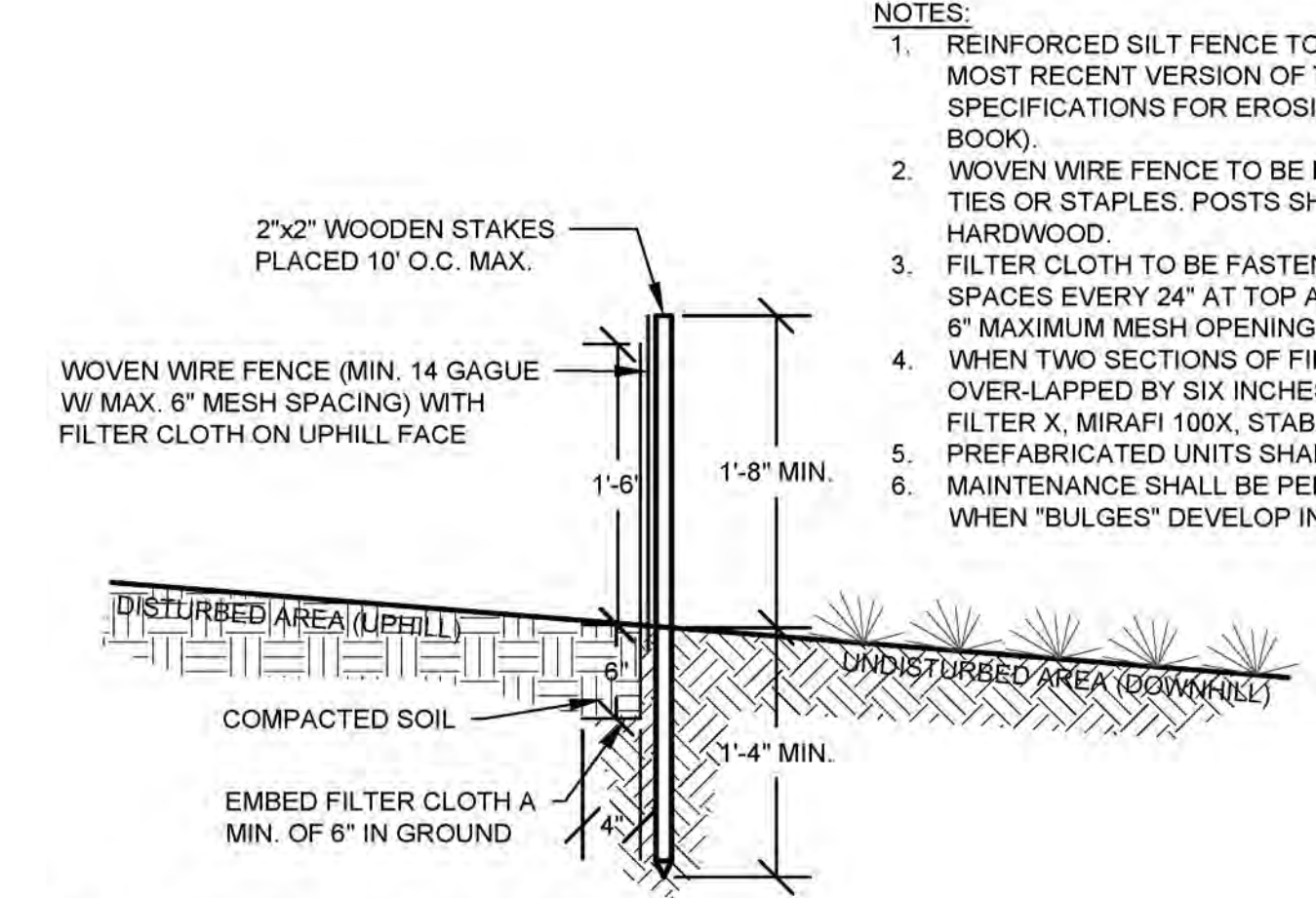
2 COMPOST FILTER SOCK
1"=1'

- NOTES:**
- COMPOST FILTER SOCK TO MEET SPECIFICATIONS AS DESCRIBED IN THE MOST RECENT VERSION OF THE "NEW YORK STATE STANDARDS AND SPECIFICATIONS FOR EROSION AND SEDIMENT CONTROL" MANUAL (BLUE BOOK).



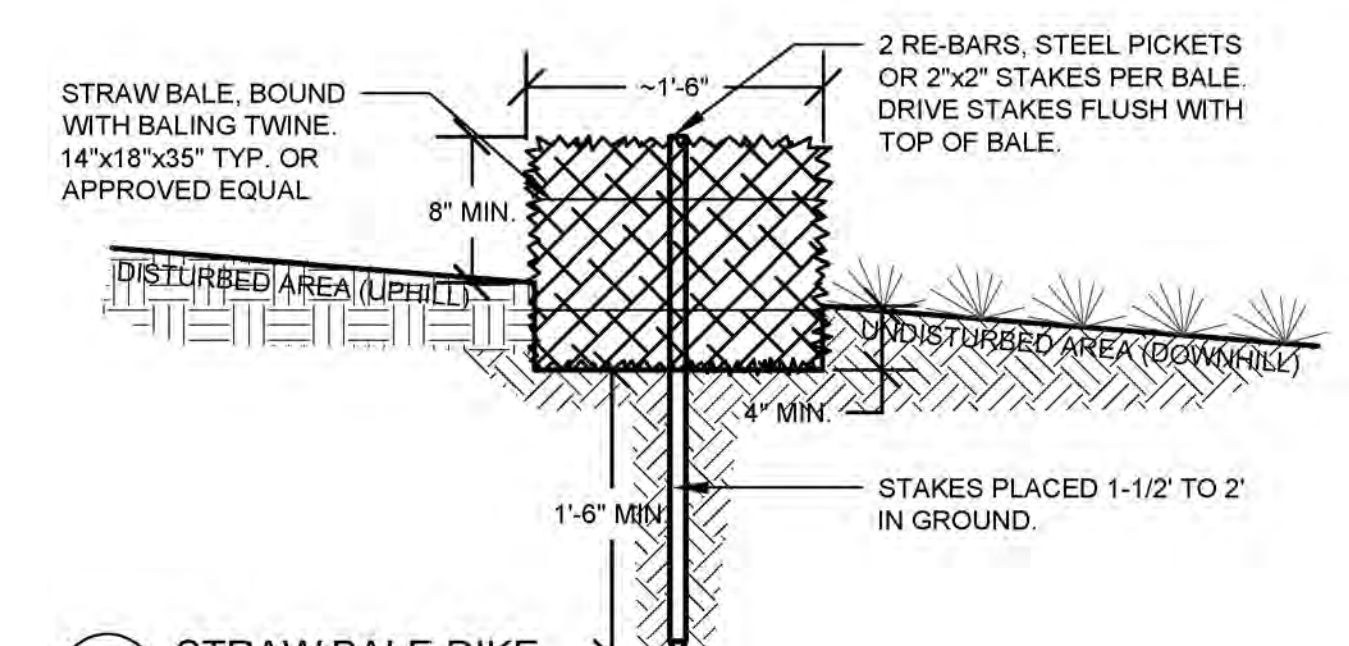
5 STABILIZED CONSTRUCTION ACCESS
1"=10'

- NOTES:**
- STABILIZED CONSTRUCTION ACCESS TO MEET SPECIFICATIONS AS DESCRIBED IN THE MOST RECENT VERSION OF THE "NEW YORK STATE STANDARDS AND SPECIFICATIONS FOR EROSION AND SEDIMENT CONTROL" MANUAL (BLUE BOOK).
 - STONE SIZE - USE 1-4 INCH STONE, OR RECLAIMED OR RECYCLED CONCRETE EQUIVALENT.
 - LENGTH - NOT LESS THAN 50 FEET (EXCEPT ON A SINGLE RESIDENCE LOT WHERE A 30 FOOT MINIMUM LENGTH WOULD APPLY).
 - THICKNESS - NOT LESS THAN SIX (6) INCHES.
 - WIDTH - TWELVE (12) FOOT MINIMUM, BUT NOT LESS THAN THE FULL WIDTH AT POINTS WHERE INGRESS OR EGRESS OCCURS. TWENTY-FOUR (24) FOOT IF SINGLE ENTRANCE TO SITE.
 - GEOTEXTILE - WILL BE PLACED OVER THE ENTIRE AREA PRIOR TO PLACING OF STONE.
 - SURFACE WATER - ALL SURFACE WATER FLOWING OR DIVERTED TOWARD CONSTRUCTION ACCESS SHALL BE PIPED BENEATH THE ENTRANCE. IF PIPING IS IMPRACTICAL, A MOUNTABLE BERM WITH 5:1 SLOPES WILL BE PERMITTED.
 - MAINTENANCE - THE ENTRANCE SHALL BE MAINTAINED IN A CONDITION WHICH WILL PREVENT TRACKING OR FLOWING OF SEDIMENT ONTO PUBLIC RIGHTS-OF-WAY. ALL SEDIMENT SPILLED, DROPPED, WASHED, OR TRACKED ONTO PUBLIC RIGHTS-OF-WAY MUST BE REMOVED IMMEDIATELY.
 - WHEN WASHING IS REQUIRED, IT SHALL BE DONE ON AN AREA STABILIZED WITH STONE AND WHICH DRAINS INTO AN APPROVED SEDIMENT TRAPPING DEVICE. PERIODIC INSPECTION AND NEEDED MAINTENANCE SHALL BE PROVIDED AFTER EACH RAIN.



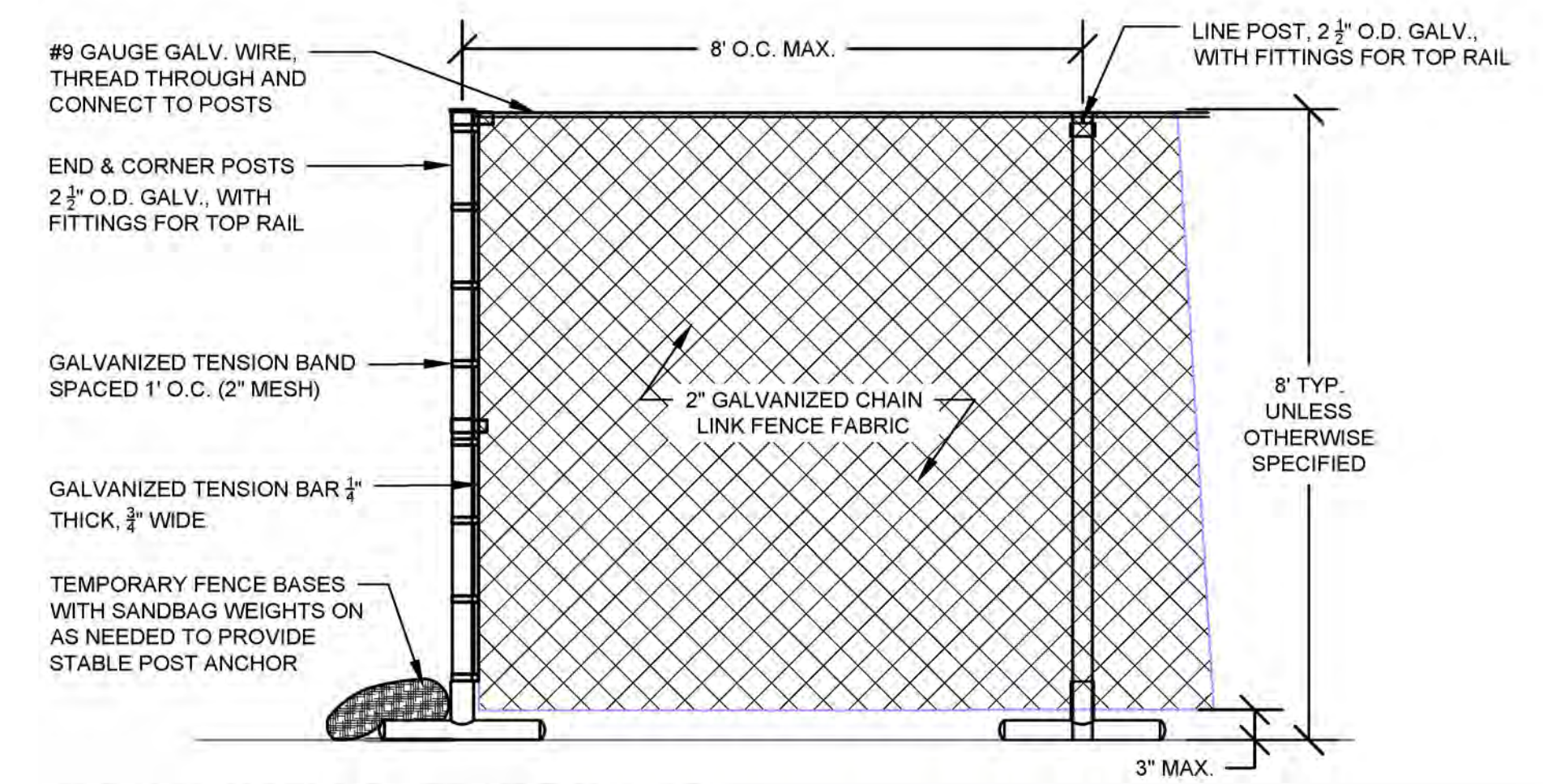
3 REINFORCED SILT FENCE
1"=1'

- NOTES:**
- REINFORCED SILT FENCE TO MEET SPECIFICATIONS AS DESCRIBED IN THE MOST RECENT VERSION OF THE "NEW YORK STATE STANDARDS AND SPECIFICATIONS FOR EROSION AND SEDIMENT CONTROL" MANUAL (BLUE BOOK).
 - WOVEN WIRE FENCE TO BE FASTENED SECURLY TO FENCE POSTS WITH WIRE TIES OR STAPLES. POSTS SHALL BE STEEL EITHER 'T' OR 'U' TYPE OR HARDWOOD.
 - FILTER CLOTH TO BE FASTENED SECURLY TO WOVEN WIRE FENCE WITH TIES SPACES EVERY 24" AT TOP AND MID SECTION. FENCE SHALL BE WOVEN WIRE, 6" MAXIMUM MESH OPENING.
 - WHEN TWO SECTIONS OF FILTER CLOTH ADJOIN EACH OTHER THEY SHALL BE OVER-LAPPED BY SIX INCHES AND FOLDED. FILTER CLOTH SHALL BE EITHER FILTER X, MIRAFI 100X, STABILINKA T140N, OR APPROVED EQUIVALENT.
 - PREFABRICATED UNITS SHALL MEET THE MINIMUM REQUIREMENTS SHOWN.
 - MAINTENANCE SHALL BE PERFORMED AS NEEDED AND MATERIAL REMOVED WHEN "BULGES" DEVELOP IN THE SILT FENCE.

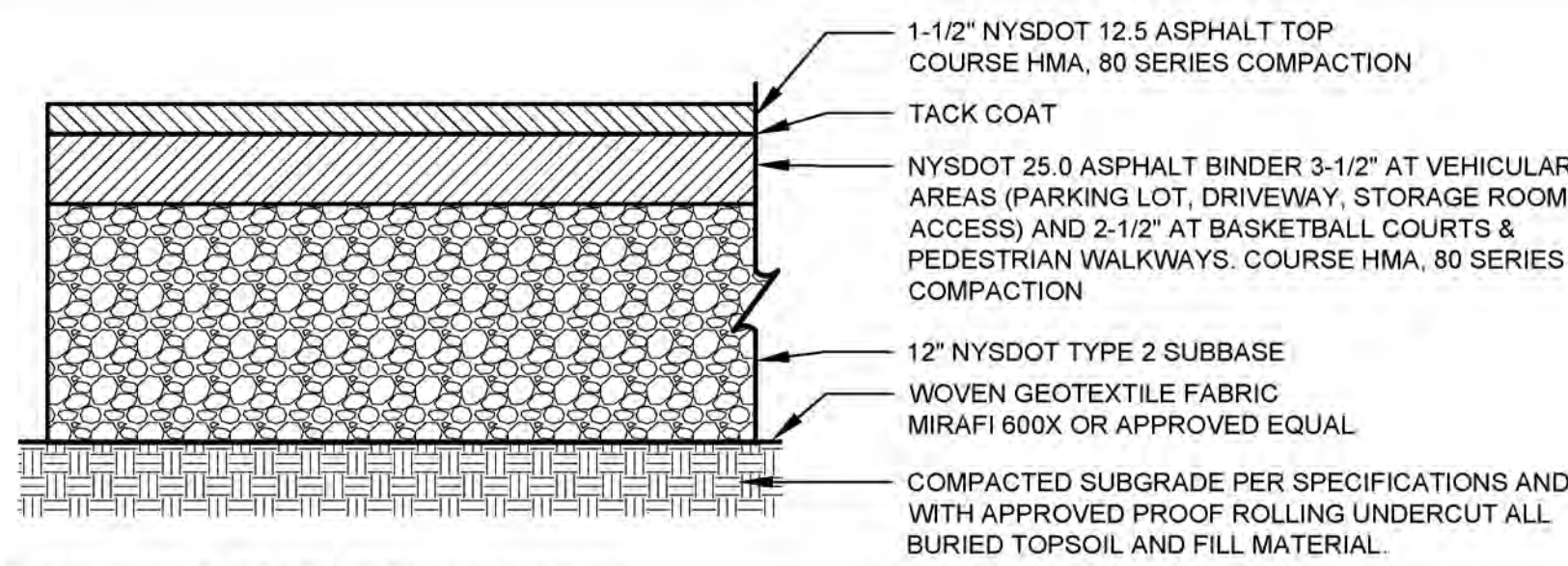


4 STRAW BALE DIKE
1"=1'

- NOTES:**
- STRAW BALE DIKE TO MEET SPECIFICATIONS AS DESCRIBED IN THE MOST RECENT VERSION OF THE "NEW YORK STATE STANDARDS AND SPECIFICATIONS FOR EROSION AND SEDIMENT CONTROL" MANUAL (BLUE BOOK).
 - BALES SHALL BE PLACED AT THE TOE OF A SLOPE OR ON THE CONTOUR AND IN A ROW WITH ENDS TIGHTLY ABUTTING THE ADJACENT BALES.
 - EACH BALE SHALL BE EMBEDDED IN THE SOIL A MINIMUM OF (4) INCHES, AND PLACED SO THE BINDINGS ARE HORIZONTAL.
 - BALES SHALL BE SECURELY ANCHORED IN PLACE BY EITHER TWO STAKES OR RE-BARS DRIVEN THROUGH THE BALE. THE FIRST STAKE IN EACH BALE SHALL BE DRIVEN TOWARD THE PREVIOUSLY LAID BALE AT AN ANGLE TO FORCE THE BALES TOGETHER. STAKES SHALL BE DRIVEN FLUSH WITH THE BALE.
 - INSPECTION SHALL BE FREQUENT AND REPAIR REPLACEMENT SHALL BE MADE PROMPTLY AS NEEDED.

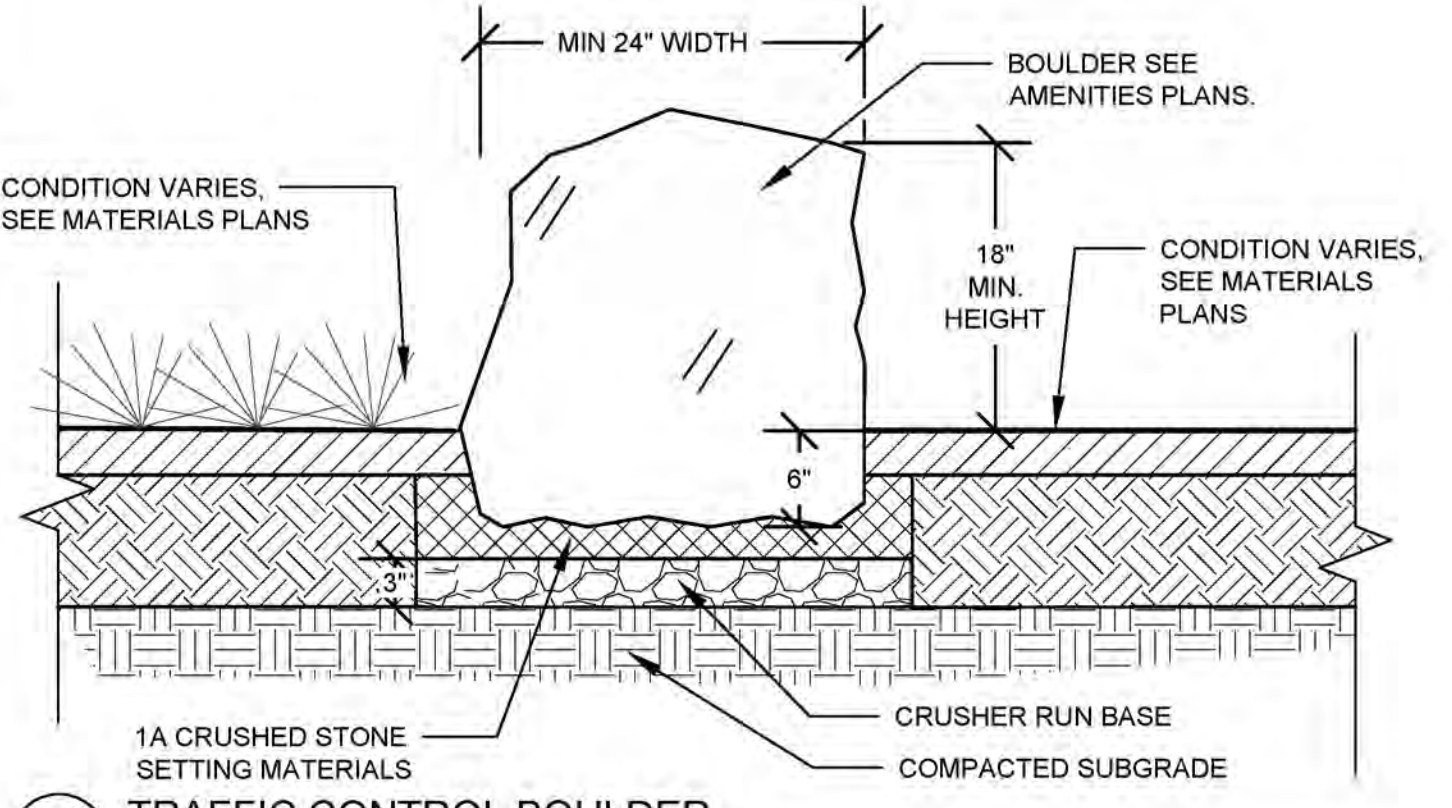


6 CONSTRUCTION SECURITY FENCE
1"=1'

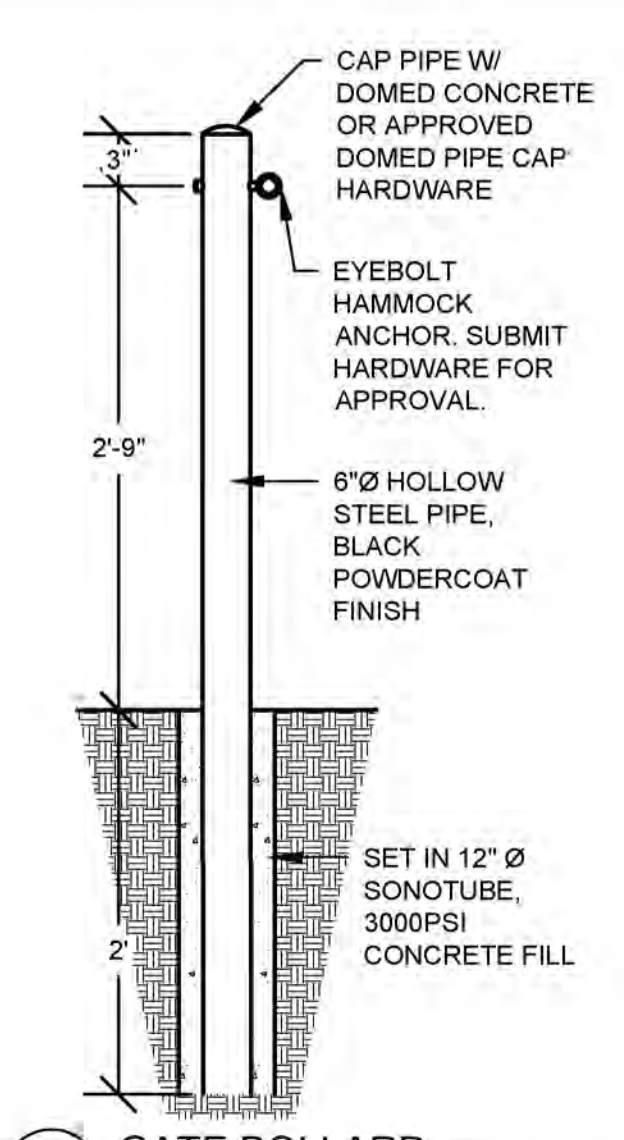


1 ASPHALT PAVEMENT SECTION
NTS

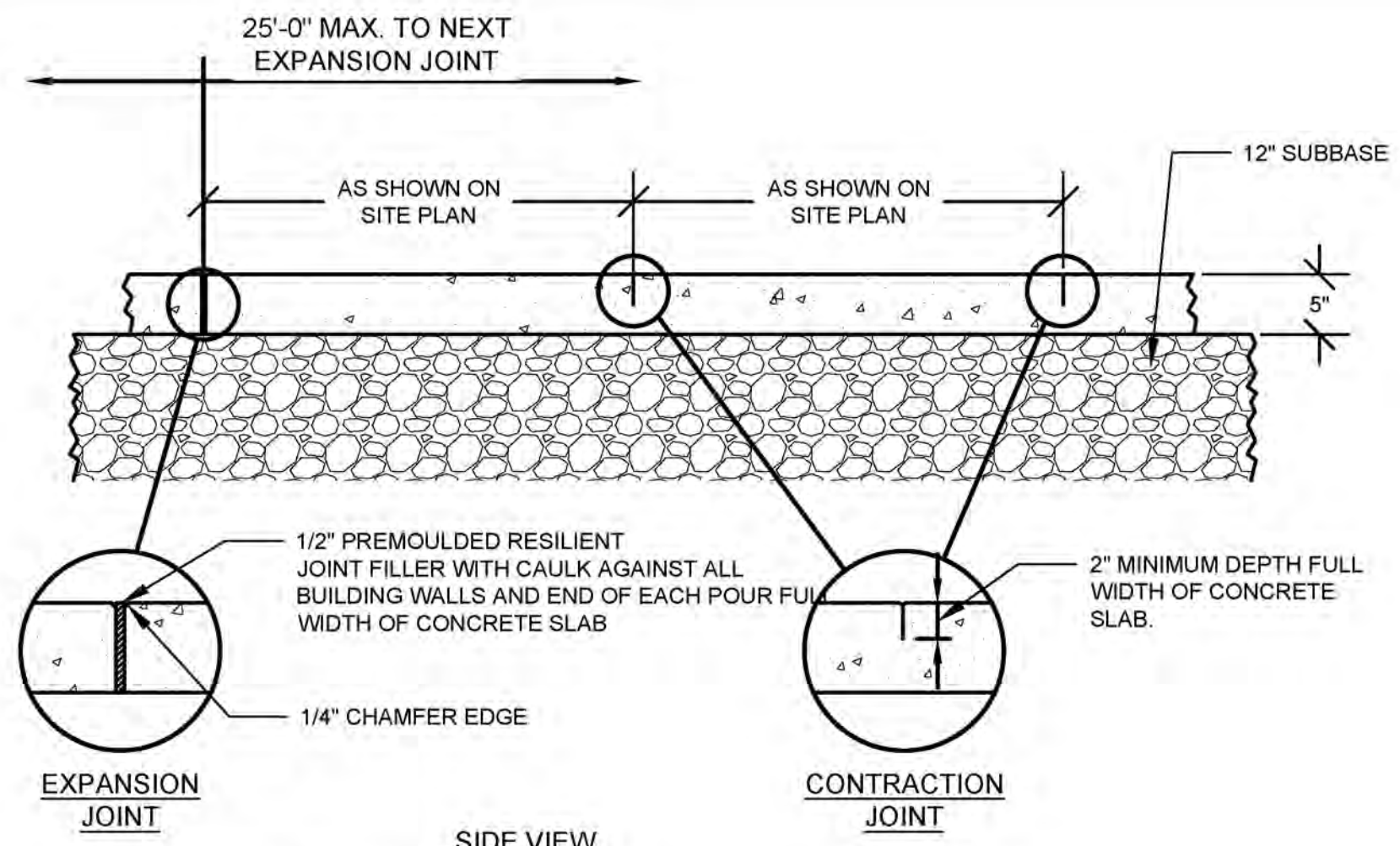
- NOTES:
- TOP TO BE SET WITH 1-2% SLOPE TO DRAIN, NOT TO EXCEED 3% SLOPE.
 - WIDTH VARIES - PROVIDE UNIT QTY & WIDTH SUCH THAT MAX 6' CLEARANCE REMAINS BETWEEN BOULDERS AND ADJACENT VEHICLE-OBSTRUCTING OBJECTS (FENCE, LIGHT POLE, BOLLARD, ETC.) ALONG LINE SEPARATING PARK FROM PARKING/ROADWAYS. CONFIRM EXTENTS W/ LANDSCAPE ARCHITECT.



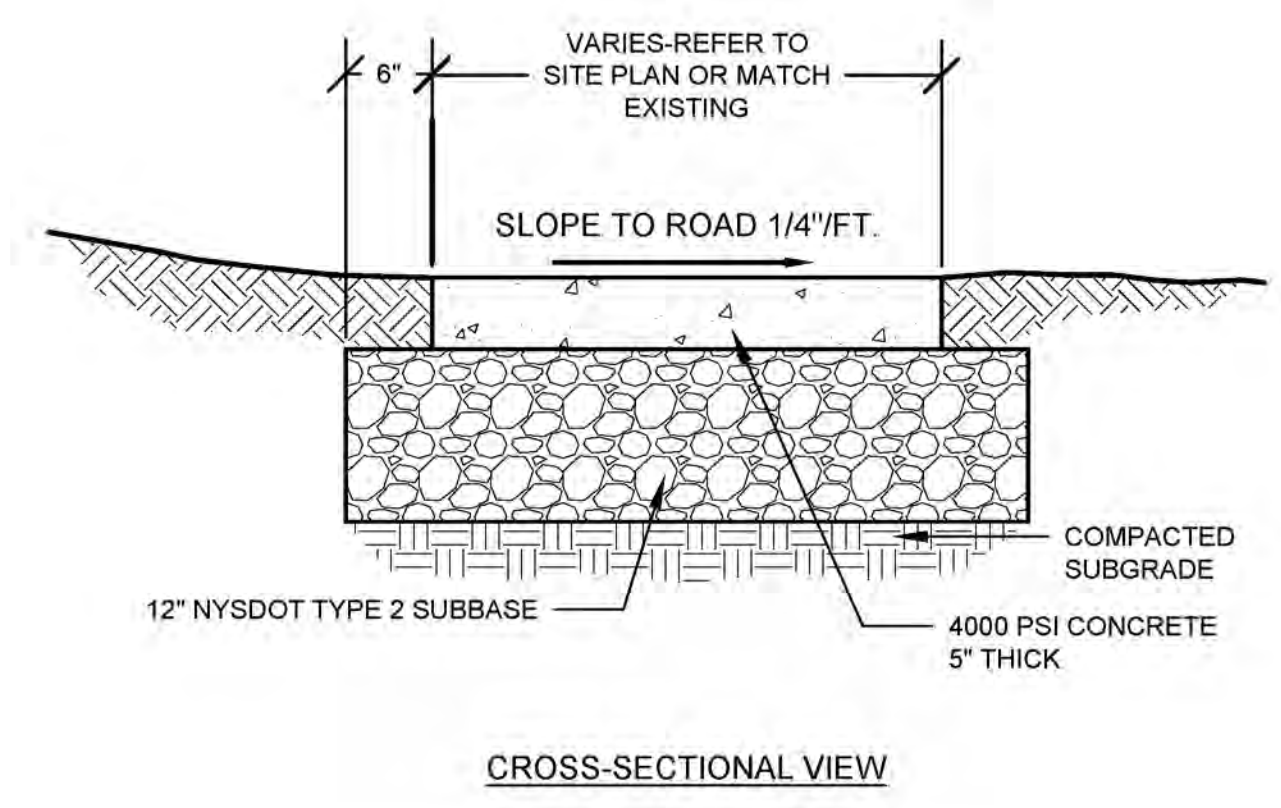
4 TRAFFIC CONTROL BOULDER
NTS



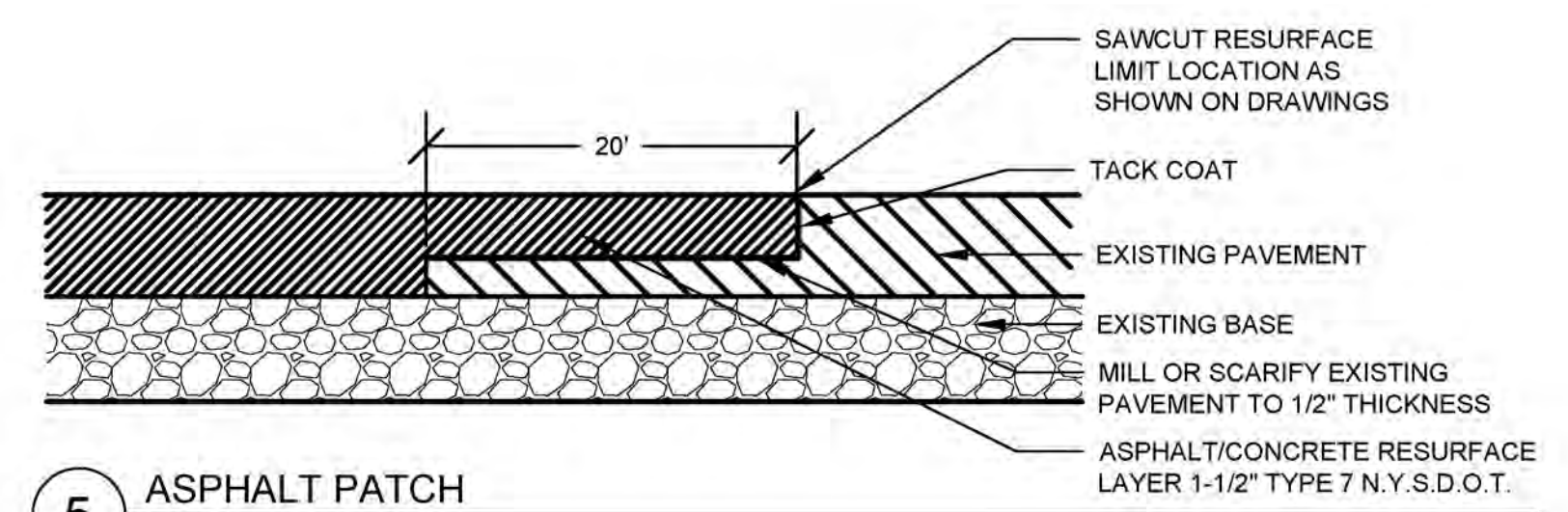
2 GATE BOLLARD
NTS



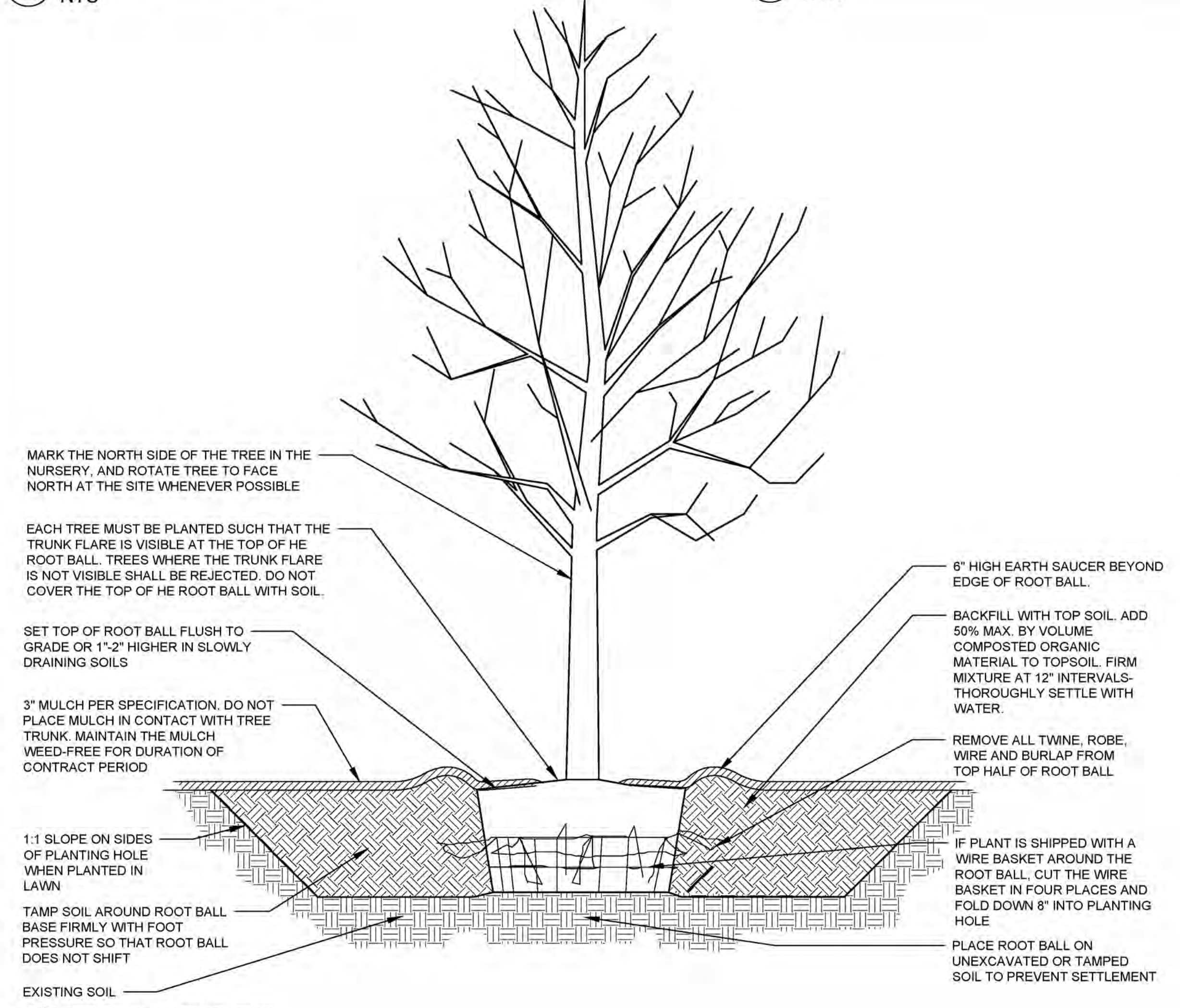
3 TYPICAL CONCRETE SIDEWALK
NTS



CROSS-SECTIONAL VIEW

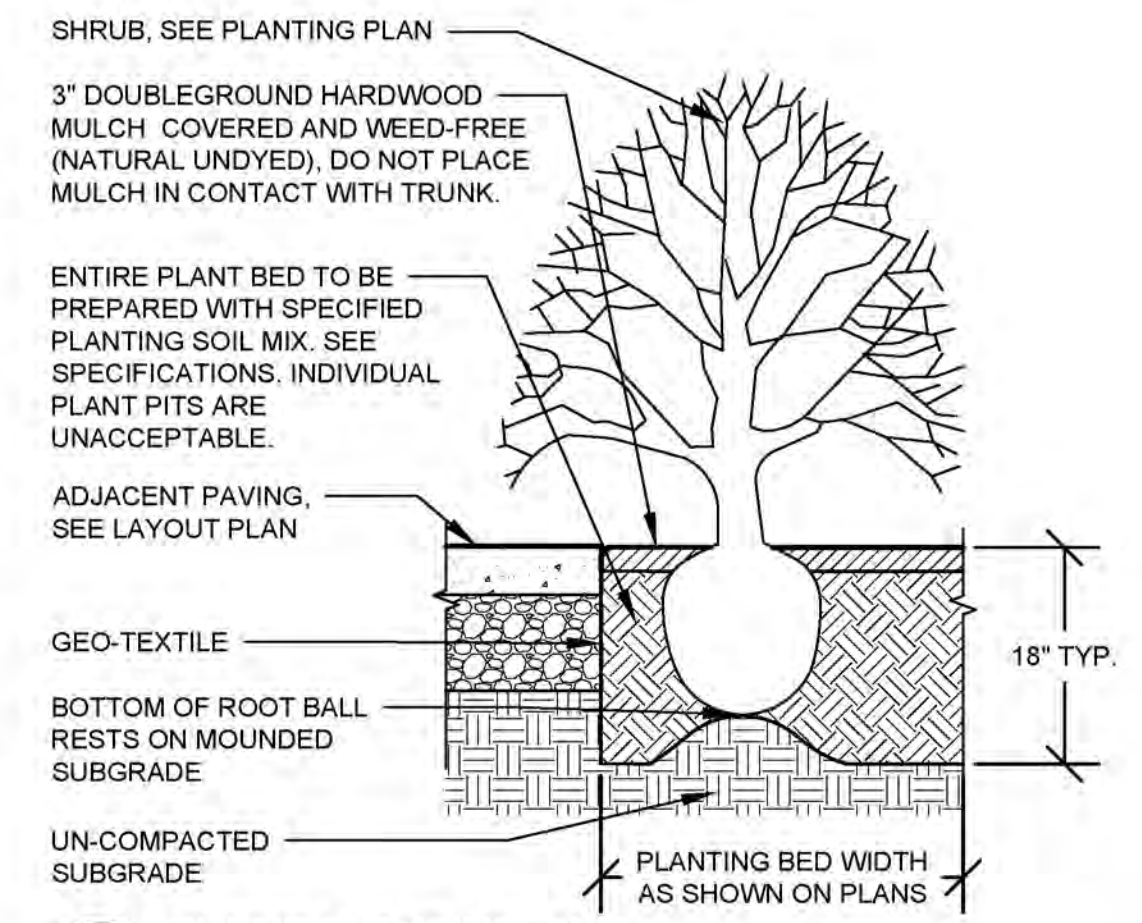


5 ASPHALT PATCH
NTS



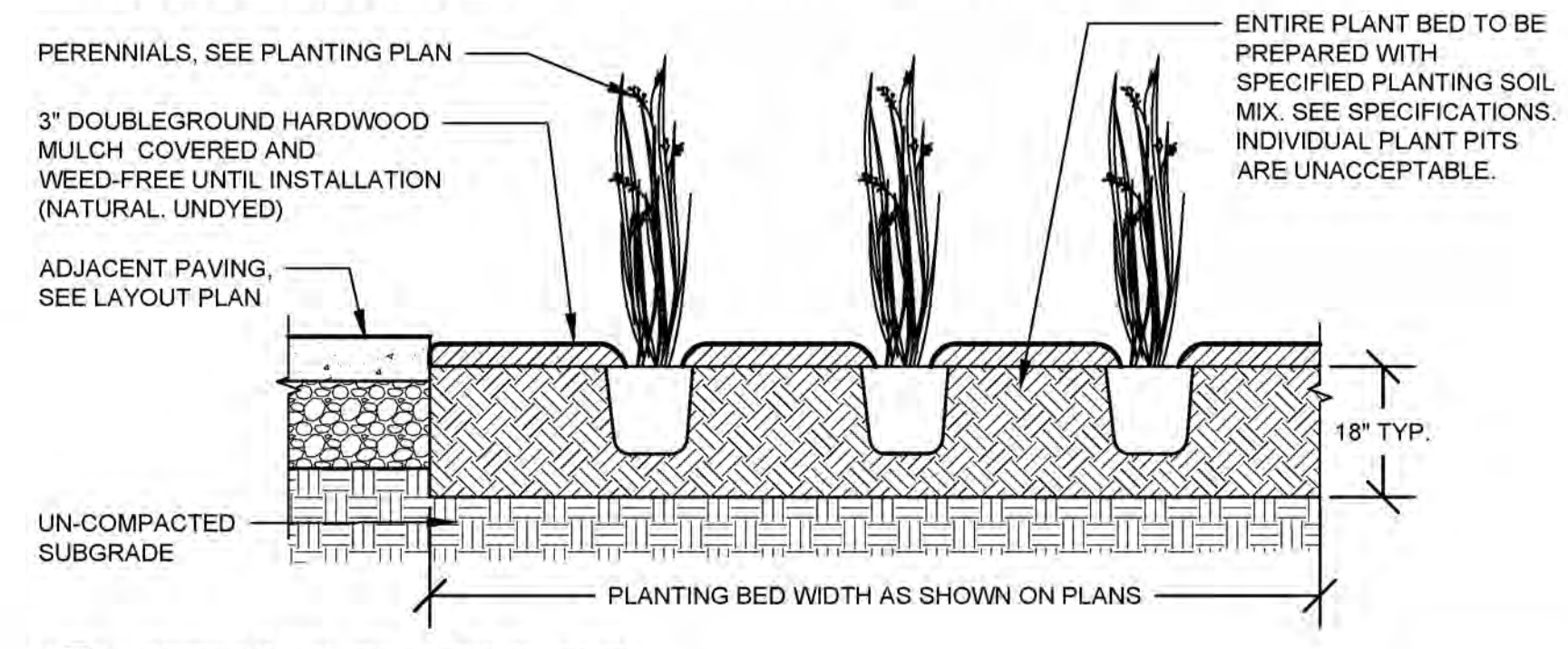
6 TREE PLANTING, TYP.
NTS

- NOTES:
- REMOVE ALL TWINE AND ROPE, WIRE OR BURLAP FOR TOP HALF OF ROOT BALL
 - LOOSEN ROOTS IF ROOT BOUND
 - ROOT CROWN AT FINISHED GRADE TO 1" ABOVE FINISHED GRADE
 - WHERE SHRUBS ARE PLANTED ADJACENT TO EXISTING TREE TO REMAIN, EXCAVATE FOR PLANTING BED BY HAND & PROTECT EXISTING ROOTS.



7 SHRUB PLANTING, TYP.
NTS

- NOTES:
- LOOSEN ROOTS IF ROOT BOUND
 - FINISHED SURFACE OF THE MULCH SHOULD BE 1" BELOW GRADE OF PAVING
 - WHERE PERENNIALS ARE PLANTED ADJACENT TO EXISTING TREE TO REMAIN, EXCAVATE FOR PLANTING BED BY HAND & PROTECT EXISTING ROOTS
 - SEE PLANTING PLAN FOR SPACING. WHERE SPACING IS NOT PROVIDED (AREA HATCH) SPACE PLANTS STAGGERED EVENLY TO FILL AREA.



8 PERENNIAL PLANTING, TYP.
NTS



WHITHAM
PLANNING DESIGN LANDSCAPE ARCHITECTURE, PLLC

142 East State Street Suite B Ithaca NY 14850

**PROGRESS
PRINT**
NOT FOR CONSTRUCTION
OR BIDDING

SEAL



Copyright © 2021
WHITHAM PLANNING DESIGN LANDSCAPE ARCHITECTURE PLLC



**Department
of State**

THIS DOCUMENT WAS PREPARED WITH
FUNDING PROVIDED BY THE NEW YORK
STATE DEPARTMENT OF STATE UNDER
TITLE 11 OF THE ENVIRONMENTAL
PROTECTION FUND.

WILLOW ISLAND
VILLAGE OF CANTON
MAIN STREET
CANTON, NEW YORK, 13617

**ELECTRICAL
SITE PLAN**

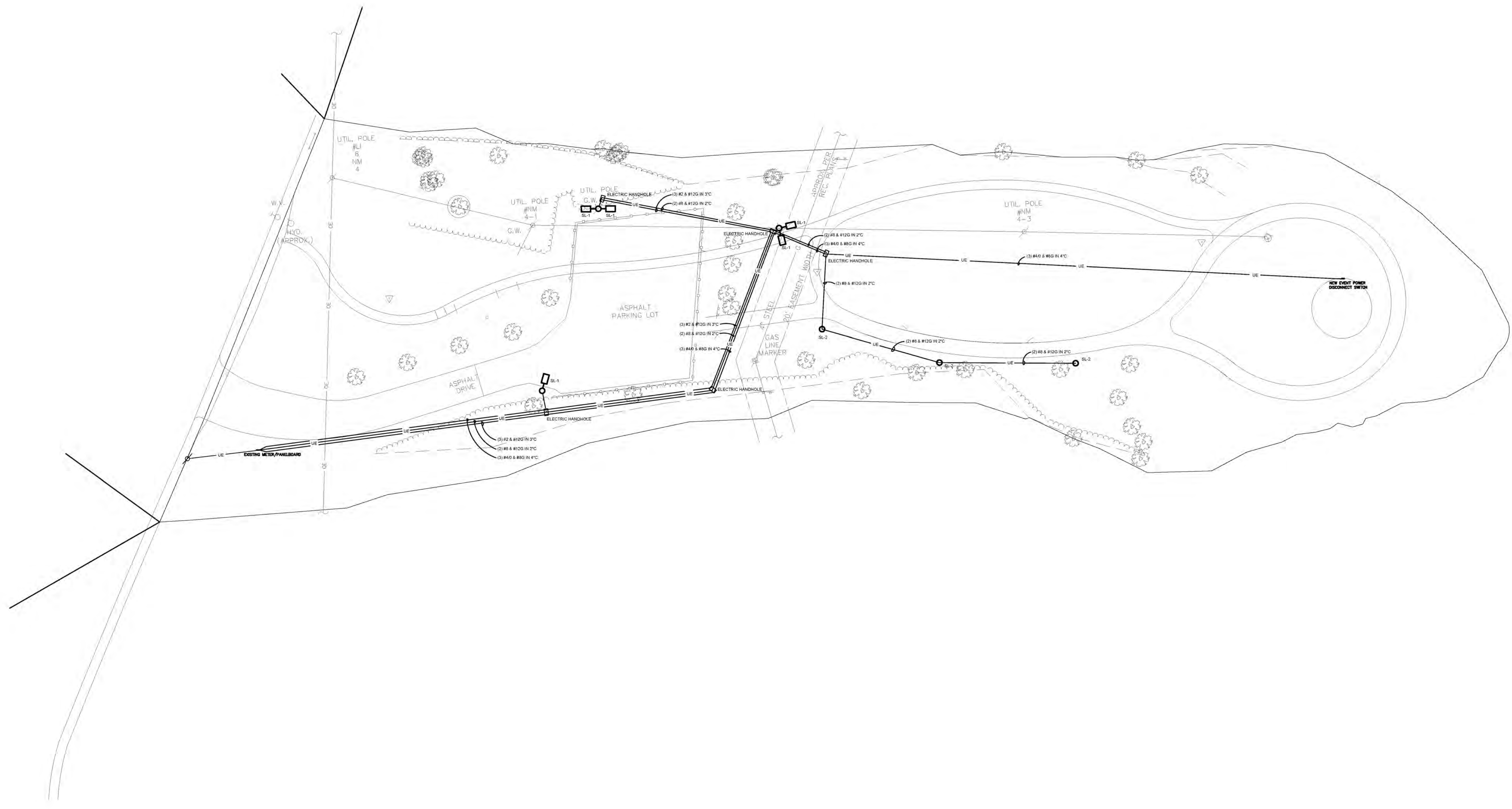
1"=25'-0"
SCALE

202214 PROJECT NO.	FAR DRAWN BY
2023/05/04 DATE	TAM CHECKED BY

ES100

ELECTRICAL GENERAL NOTES:

1. DRAWINGS ARE DIAGRAMMATIC AND INDICATE GENERAL ARRANGEMENT OF SYSTEMS AND WORK. FOLLOW DRAWINGS IN LAYING OUT WORK AND CHECK DRAWINGS OF OTHER TRADES TO VERIFY SPACE CONDITIONS. MAINTAIN HEADROOM AND SPACE CONDITIONS.
2. CUT CONDUIT ENDS SQUARE. REAM SMOOTH. PAINT MALE THREAD OF FIELD THREADED RACEWAYS WITH GRAPHITE BASE PIPE COMPOUND. DRAW UP TIGHT WITH RACEWAY COUPLING.
3. LEAVE WIRES WITH SUFFICIENT SLACK TO PERMIT MAKING FINAL CONNECTIONS. RACEWAYS OVER 10 FT LONG IN WHICH WIRING IS NOT INSTALLED: FURNISH FISH WIRE.
4. COVERS OF JUNCTION AND PULLBOXES SHALL BE READILY ACCESSIBLE.
5. PROVIDE HANDHOLES/PULLBOXES WHERE INDICATED, WHERE REQUIRED BY CODE AND WHEREVER NECESSARY TO FACILITATE PULLING OF WIRE. COORDINATE HANDHOLES/PULLBOX LOCATIONS WITH OTHER TRADES.
6. WIRE COLOR CODING: AS PER CODE. WHERE COLOR-CODED CABLE IS NOT AVAILABLE, CERTIFY IN WRITING AND REQUEST PERMISSION FOR OVERLAP COLOR TAPING OF CONDUCTORS (MINIMUM LENGTH 6") IN ACCESSIBLE LOCATIONS. COLOR CODING, ONCE SELECTED, MUST BE USED CONSISTENTLY FOR THE ENTIRE PROJECT.
7. AT COMPLETION OF PROJECT, PROVIDE NEW UPDATED TYPE WRITTEN PANELBOARD DIRECTORIES.
8. ALL TAMPER PROOF FASTENERS SHALL BE TORX HEAD WITH CENTER PIN REJECT TYPE THROUGHOUT.



LUMINAIRE SCHEDULE								
TYPE	DESCRIPTION	MANUFACTURER	LAMP	VOLTAGE/DRIVER	LUMENS	WATTAGE	MOUNTING	NOTES
SL-1	18 3/8" DIA. x 1/8" H LED AREA LIGHT, BRONZE FINISH, TYPE 4 DIST	COOPER MCGRAW-EDISON TT-D6-830-1-T4-PM-BZ OR APPROVED EQUAL	LED, 3000 DEG. K	120 VOLT	13000	97.4	20' WOODEN POLE	COORDINATE HEIGHT WITH ARCH/ENG
SL-2	ARCHITECTURAL LED POST TOP, FULL CUTOFF, TYPE 3 DISTRIBUTION, CORROSION RESISTANT ALUMINUM, BRONZE FINISH	COOPER INVUE ARB-B3-LED-D1-T2-BZ-PC OR APPROVED EQUAL	LED, 3000 DEG. K	120/277 VOLT DIMMABLE	8500	96	12' TALL x 4" DIA ROUND STRAIGHT AL POLE, BRONZE	INTEGRAL PHOTOCELL



142 East State Street Suite B Ithaca NY 14850

PROGRESS PRINT
NOT FOR CONSTRUCTION OR BIDDING

SEAL
RAM-TECH ENGINEERS
Syracuse, NY • Buffalo, NY • Philadelphia, PA
RAM-TECH Engineers of Syracuse, P.C.
Phone: 315-462-7116
Fax: 315-462-7138
www.ramtechengineers.com

COPYRIGHT © 2021
WHITHAM PLANNING DESIGN LANDSCAPE ARCHITECTURE PLLC



Department of State

THIS DOCUMENT WAS PREPARED WITH FUNDING PROVIDED BY THE NEW YORK STATE DEPARTMENT OF STATE UNDER TITLE 11 OF THE ENVIRONMENTAL PROTECTION FUND.

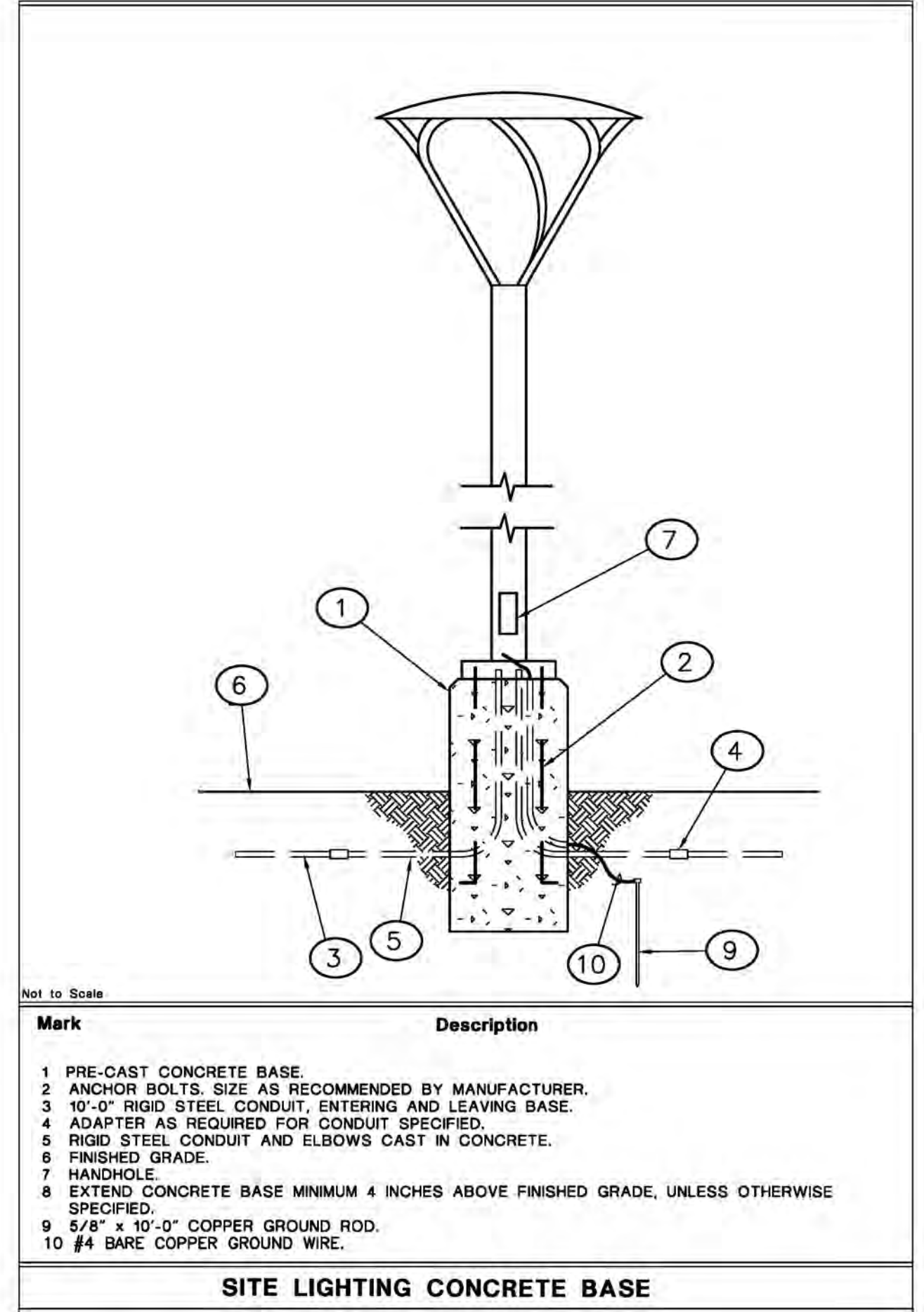
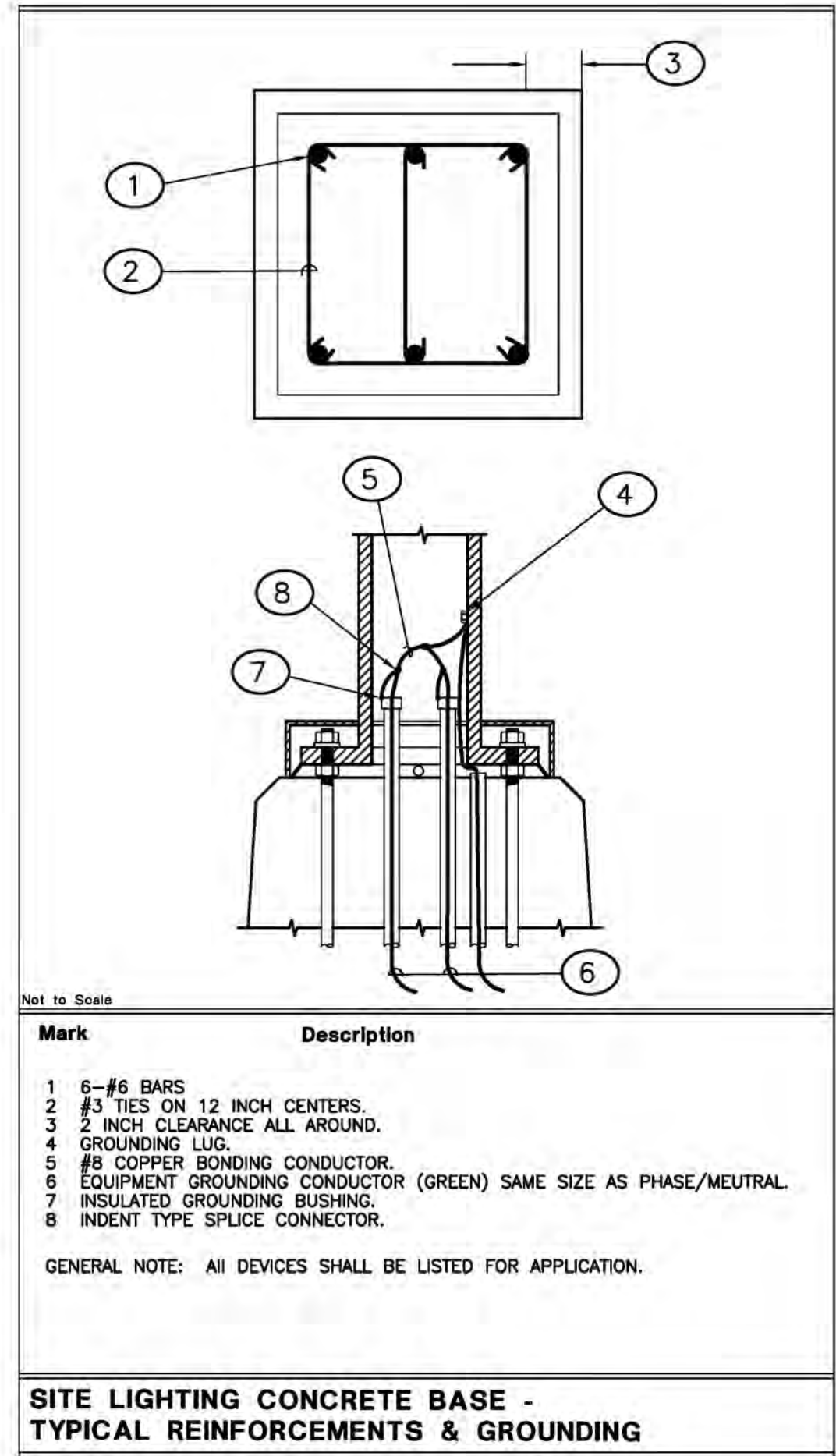
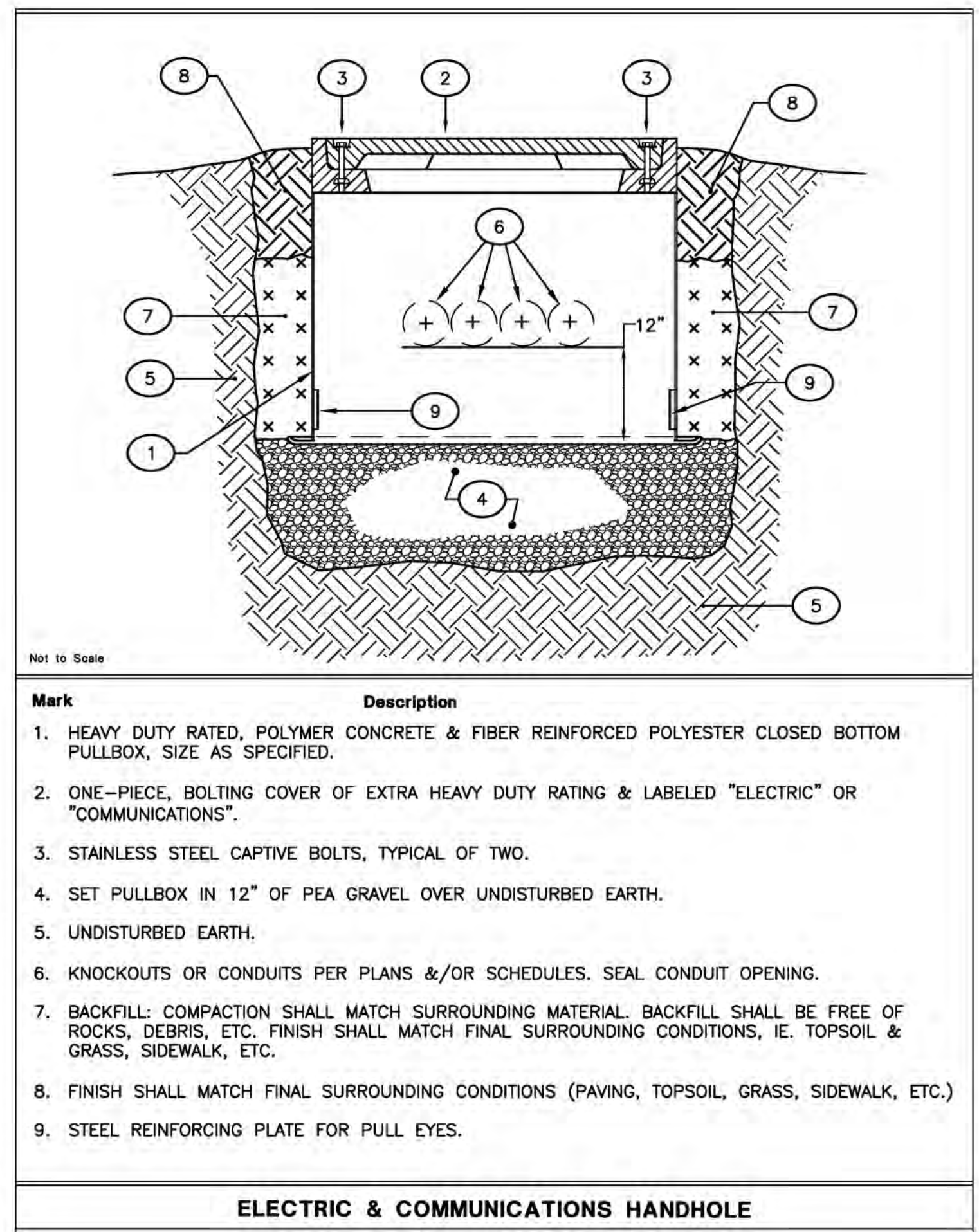
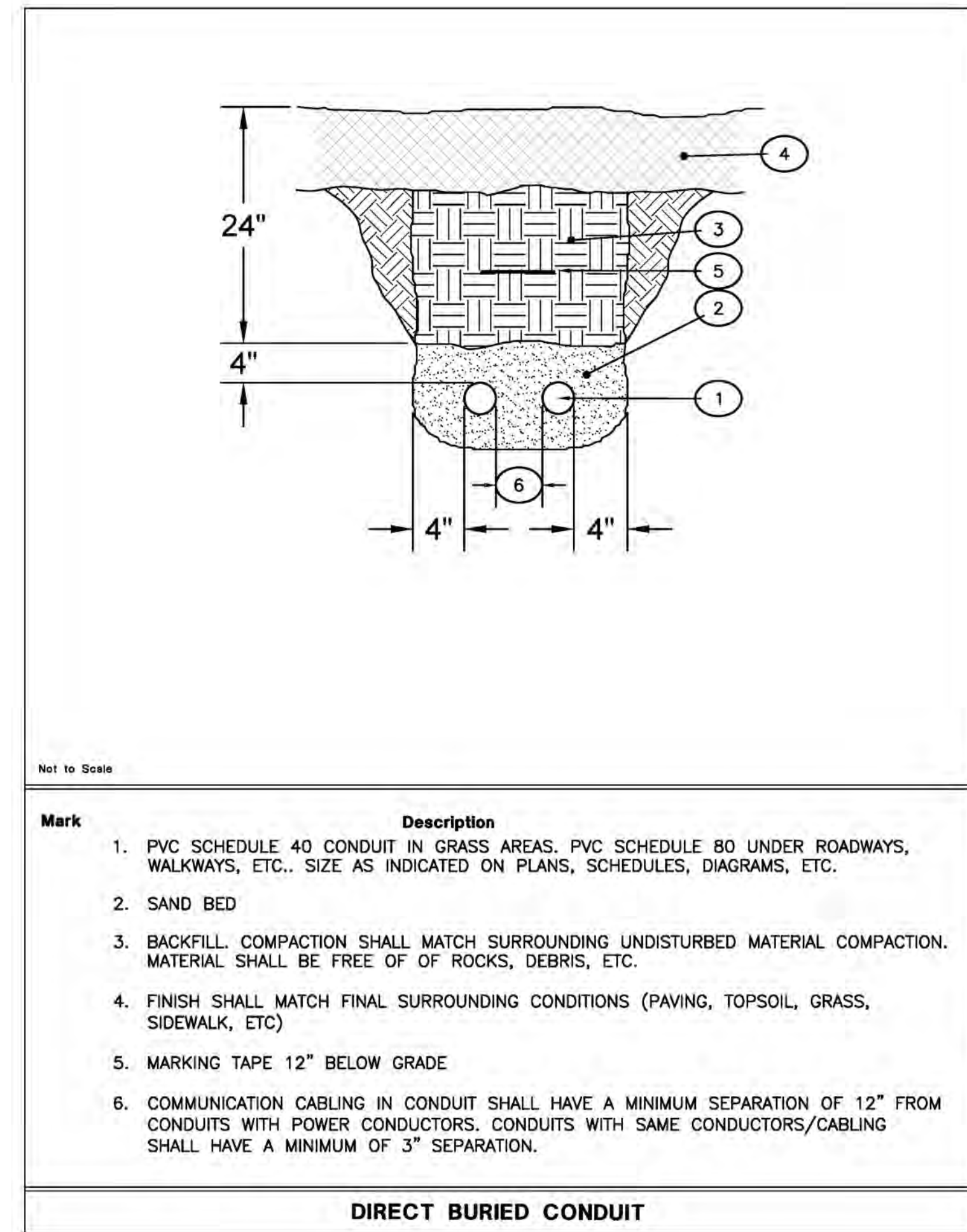
WILLOW ISLAND
VILLAGE OF CANTON
MAIN STREET
CANTON, NEW YORK, 13617

SCHEDULE & DETAILS

AS NOTED SCALE

202214 PROJECT NO.	FAR DRAWN BY
2023/05/04 DATE	TAM CHECKED BY

ES500



PROGRESS PRINT
NOT FOR CONSTRUCTION OR BIDDING

SEAL

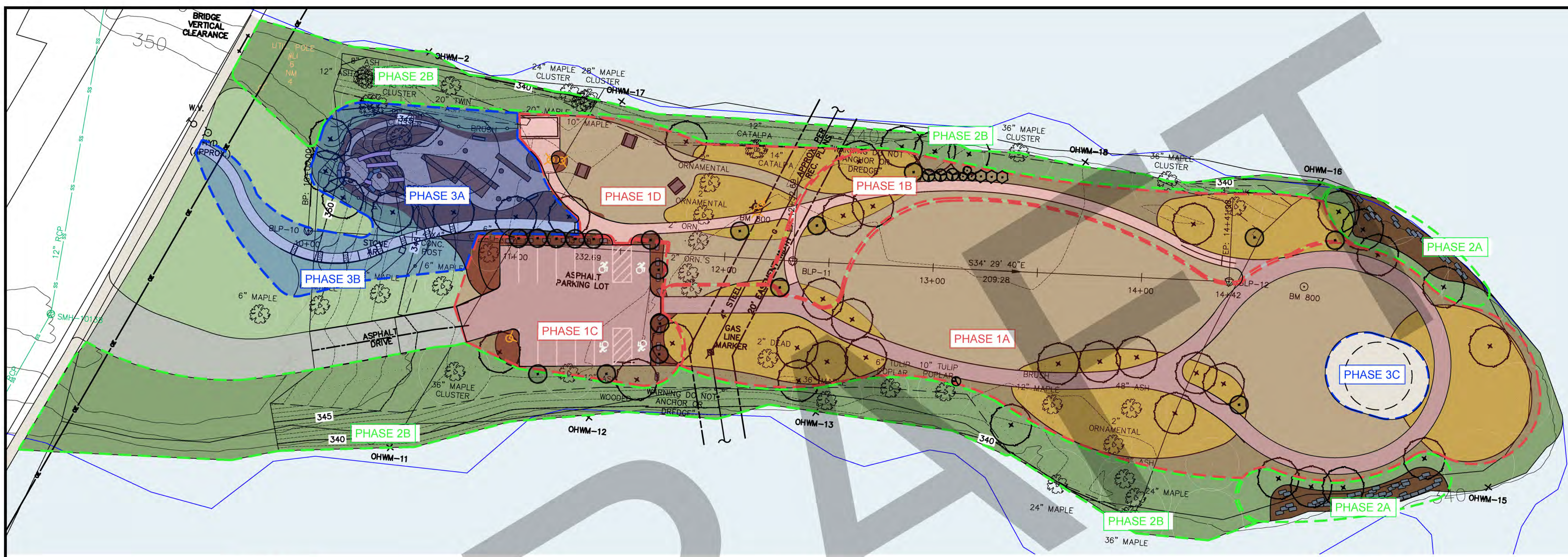
NOTICE: IT IS A VIOLATION OF LAW FOR ANY PERSON UNLESS ACTING UNDER THE DIRECTION OF A LICENSED LANDSCAPE ARCHITECT TO ALTER ANY ITEM ON THIS DOCUMENT. WHOEVER ALTERS THIS DOCUMENT IS REQUIRED BY LAW TO AFFIX HIS OR HER SEAL AND THE NOTATION "ALTERED BY" FOLLOWED BY HIS OR HER SIGNATURE AND A SPECIFIC DESCRIPTION OF ALTERATIONS.

Copyright © 2021
WHITHAM PLANNING DESIGN LANDSCAPE ARCHITECTURE, PLLC



Department of State

THIS DOCUMENT WAS PREPARED WITH FUNDING PROVIDED BY THE NEW YORK STATE DEPARTMENT OF STATE UNDER TITLE 11 OF THE ENVIRONMENTAL PROTECTION FUND.



PHASE 1		
KEY	NAME	NOTE
PHASE 1A:	DEMO OF VARIOUS SITE FEATURES	
	GRADING, BALANCED CUT/FILL	
	UNDERGROUND ELECTRICAL CONDUIT TO STAGE AREA	
	8' WIDE ASPHALT TRAIL	
	TREE PLANTING	
	MEADOW ESTABLISHMENT	
PHASE 1B:	TREE PLANTING	
	MEADOW ESTABLISHMENT	
	5' WIDE CONCRETE TRAIL	
PHASE 1C:	DEMO EXISTING PARKING LOT & ASSOCIATED FEATURES	
	NEW ASPHALT PARKING LOT PAVING	
	BOULDER SECURITY FENCE	
	PARKING LOT LIGHTING	
	PARKING STRIPING & SIGNAGE	
	PARKING PLANTING (SHADE TREES)	
PHASE 1D:	BATHROOM SLAB	
	5' WIDE CONCRETE TRAIL	
	BATHROOM AREA LIGHTING	
	GRILLS	
	PICNIC TABLES	

PHASE 2		
KEY	NAME	NOTE
PHASE 2A:	STREAMBANK STABILIZATION	
PHASE 2B:	INVASIVE SPECIES REMEDIATION	
	NATIVE BANK PLANTINGS/ShORELINE REESTABLISHMENT	

PHASE 3		
KEY	NAME	NOTE
PHASE 3A:	DEMO OF VEGETATED AREA	
	GRADING, CUT/FILL	
	STANDALONE PLAYGROUND FEATURES	
	BUILT-INTO SITE PLAYGROUND FEATURES (HILL SLIDES)	
	ENGINEERED WOOD MULCH PLAYGROUND SURFACING	
	PLAYGROUND PERIMETER FENCE	
	BENCHES	
	PLAYGROUND PLANTING	
PHASE 3B:	RELOCATION OF ART PARK SCULPTURES	
	GRADING, CUT/FILL FOR PATH	
	5' WIDE CONCRETE SIDEWALK CONNECTION RAMP	
PHASE 3C:	STAGE	

WILLOW ISLAND
VILLAGE OF CANTON
 MAIN STREET
 CANTON, NEW YORK, 13617

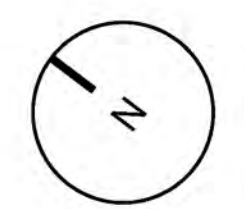
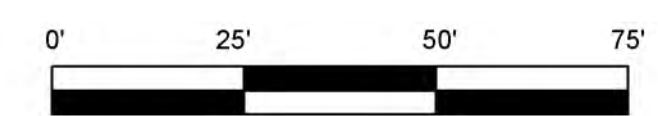
PHASING PLAN

1"=25'
SCALE

202214 PROJECT NO. JvM DRAWN BY
2023.06.07 DATE MP CHECKED BY

L-003

DRAFT



WILLOW ISLAND
VILLAGE OF CANTON
MAIN STREET
CANTON, NEW YORK, 13617

COLOR SCHEMATIC PLAN

1"=25'
SCALE

202214 PROJECT NO.	JvM DRAWN BY
2023.06.07 DATE	MP CHECKED BY

L-000



DRAFT

