





Source: Esri, DigitalGlobe, GeoEye, Earthstar Geographics, CNES/Airbus DS, USDA, USGS, AeroGRID, IGN, and the GIS User Community

Legend

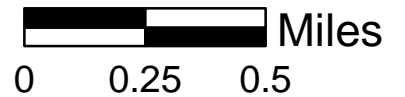
-  BOA Boundary
-  BOA Parcels

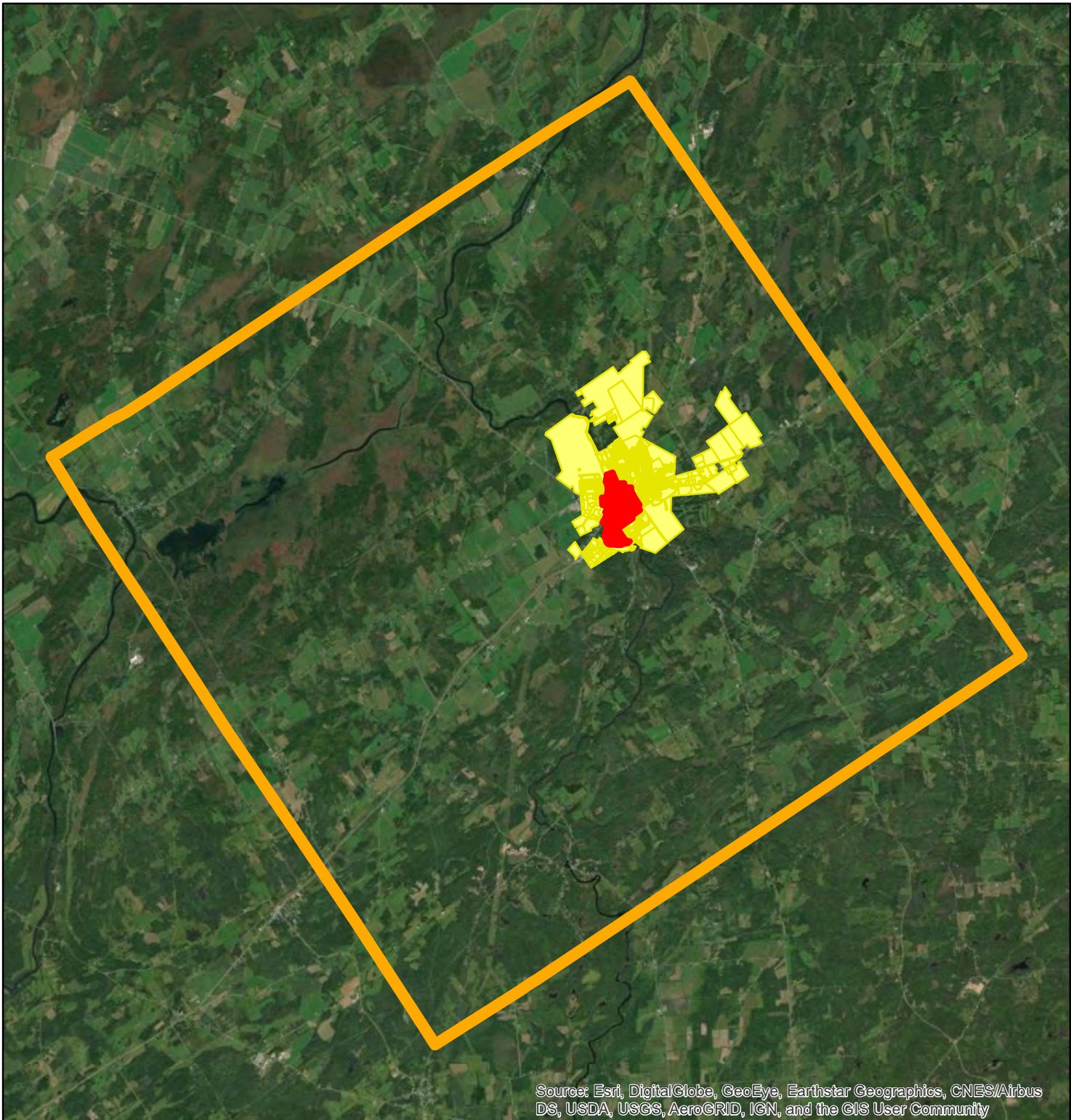
Town and Village of Canton, New York



Brownfield Opportunity Area Study Area




Map 1 : Brownfield
Opportunity Area Boundary
with Parcels





Source: Esri, DigitalGlobe, GeoEye, Earthstar Geographics, CNES/Airbus DS, USDA, USGS, AeroGRID, IGN, and the GIS User Community

Legend

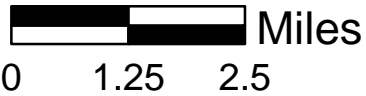
-  BOA Boundary
-  Village of Canton
-  Town of Canton, NY

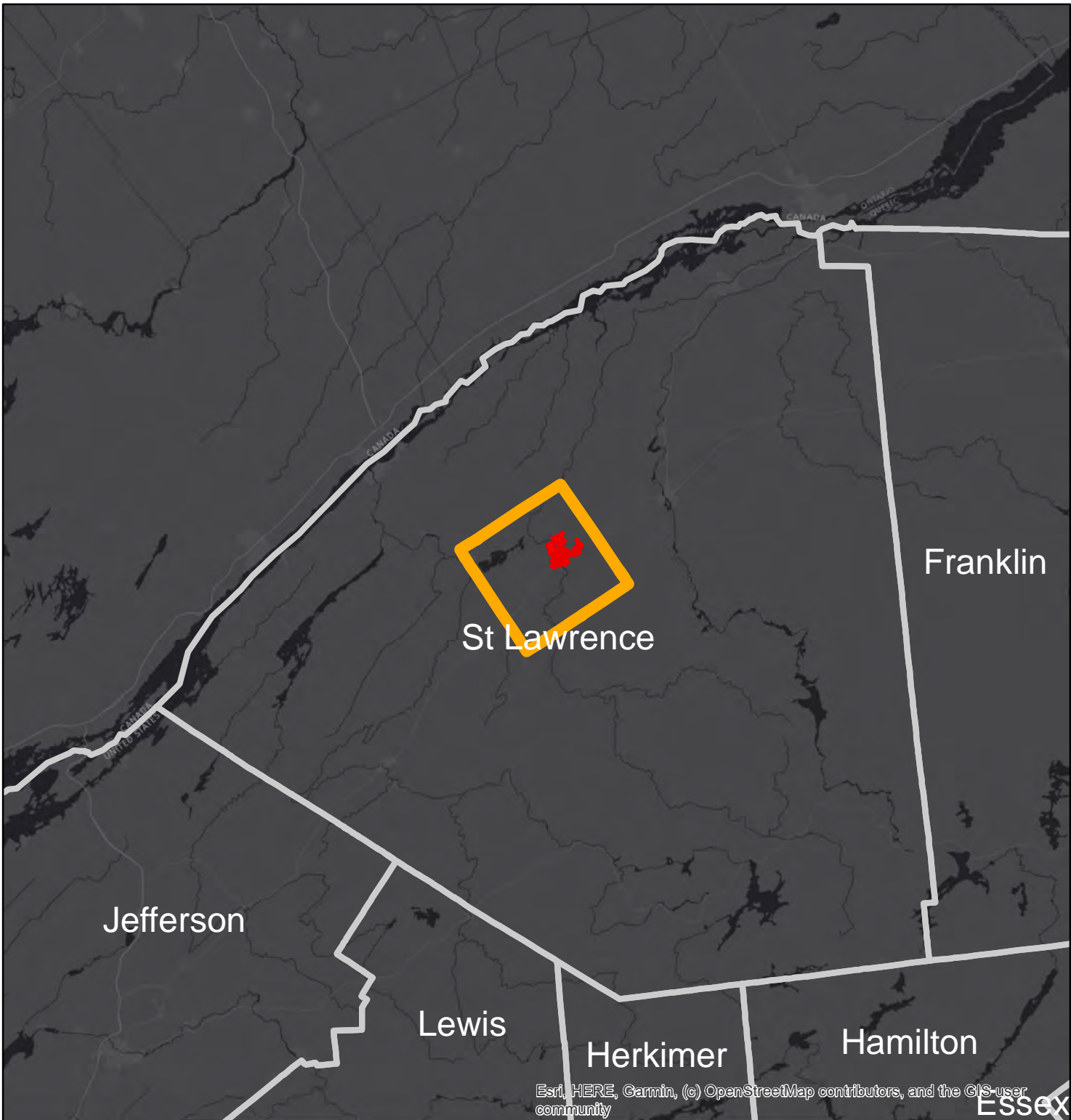
Town and Village of Canton, New York






Brownfield Opportunity Area Study Area

Map 2: Brownfield Opportunity Area Setting within Town and Village of Canton





Legend

-  Counties
-  Village of Canton
-  Town of Canton, NY

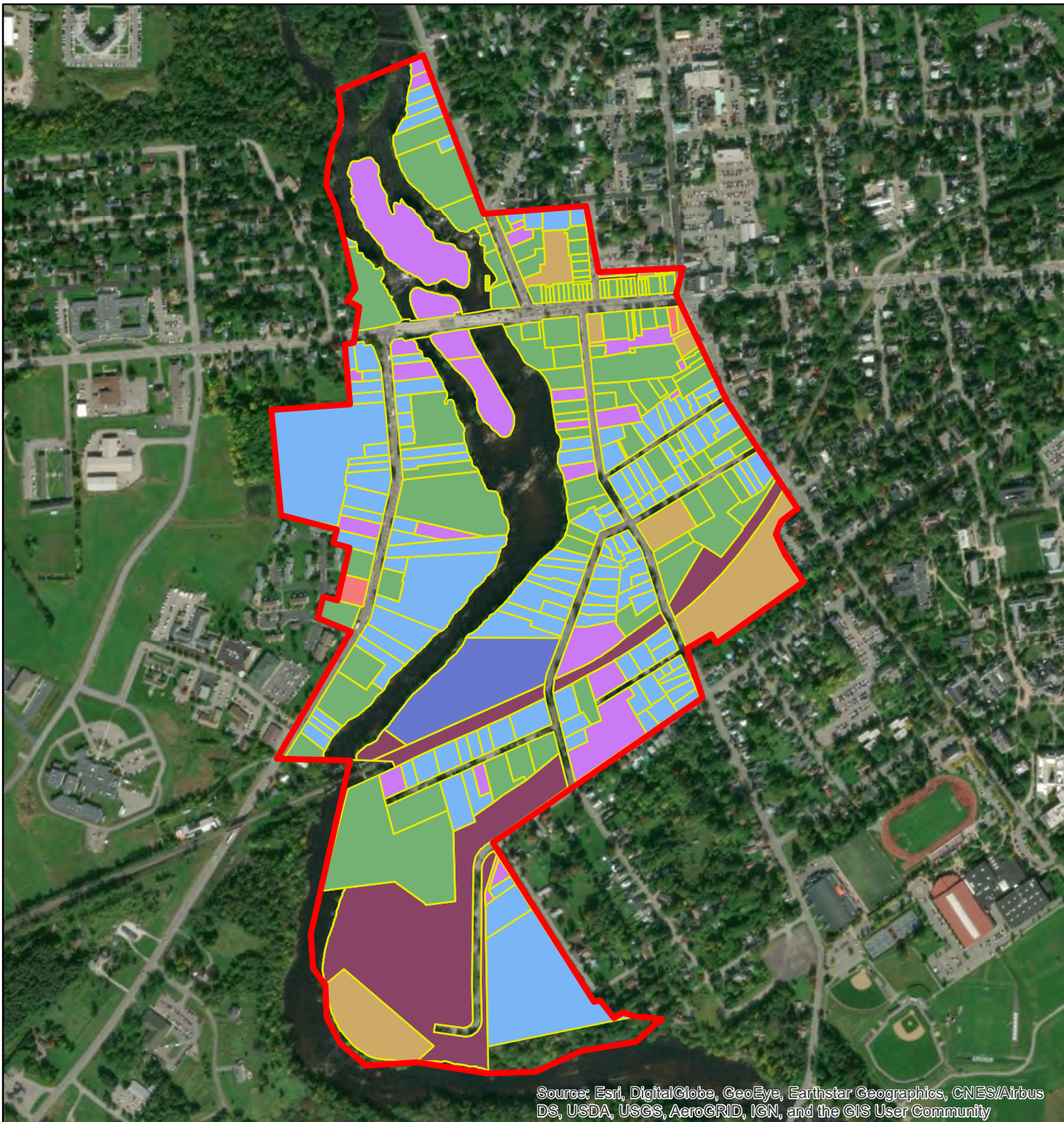
**Town and Village of
Canton, New York**



**Brownfield Opportunity
Area Study Area**

Map 3 : Town
and Village of
Canton Regional
Setting





Legend

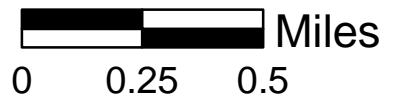
- 200 - Residential
- 300 - Vacant
- 400 - Commercial
- 500 - Rec and Entertainment
- 600 - Community Services
- 700 - Industrial
- 800 - Public Services
- BOA Parcels
- BOA Boundary

Town and Village of Canton, New York

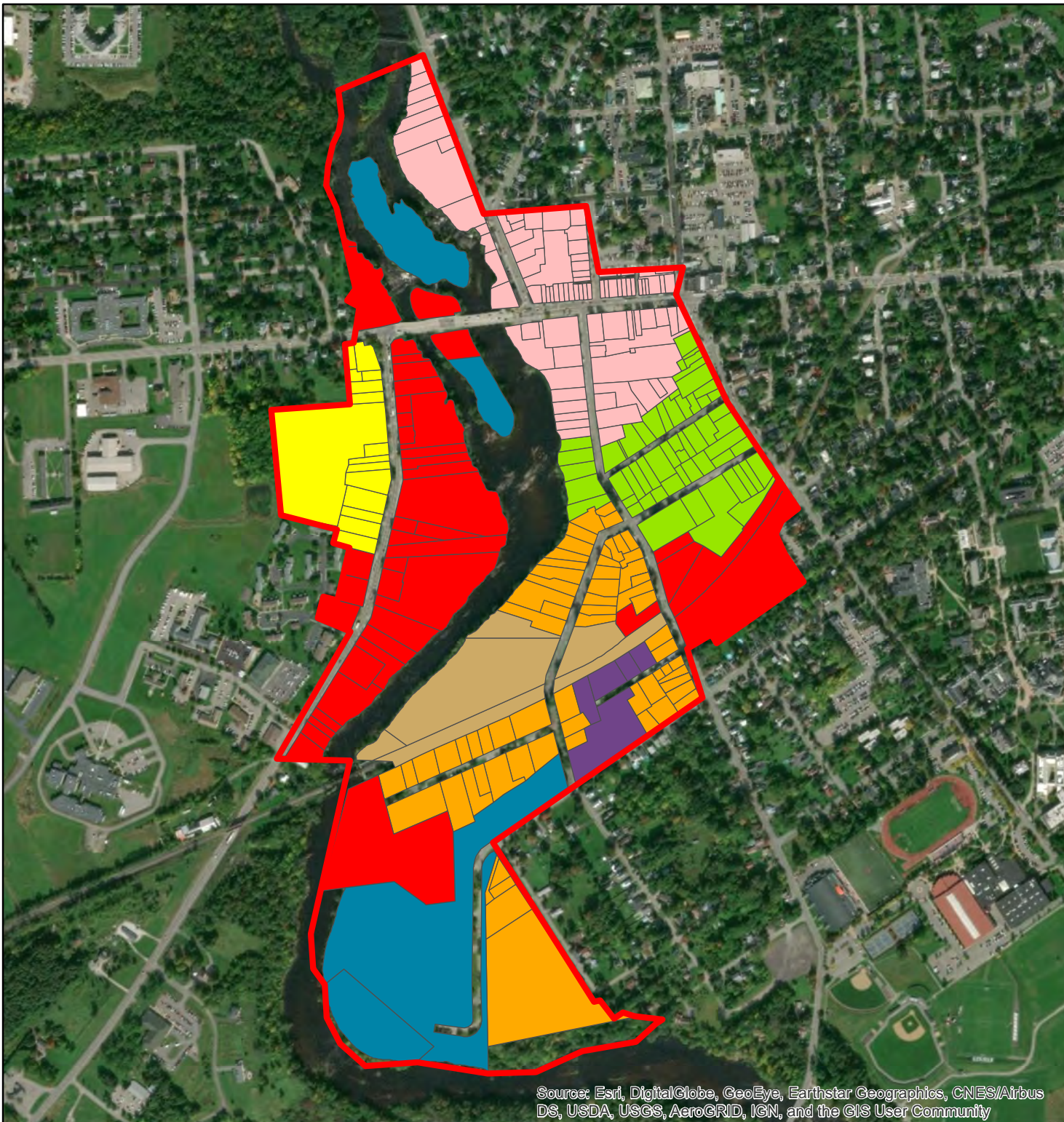


Brownfield Opportunity Area Study Area

Map 4: Brownfield
Opportunity Area Land Use



Source: Esri, DigitalGlobe, GeoEye, Earthstar Geographics, CNES/Airbus DS, USDA, USGS, AeroGRID, IGN, and the GIS User Community



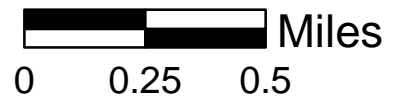
Legend

- C-1 Retail Commercial
- B-1 Business
- O-S Open Space
- R-1 Residential One-Family
- C-2 General Commercial
- M-1 Manufacturing
- P-M Planned Manufacturing
- R-2 Residential Two-Family
- BOA Boundary

**Town and Village of
Canton, New York**



**Brownfield Opportunity
Area Study Area
Map 5 : Brownfield
Opportunity Area Zoning**



Source: Esri, DigitalGlobe, GeoEye, Earthstar Geographics, CNES/Airbus DS, USDA, USGS, AeroGRID, IGN, and the GIS User Community



Source:
Esri,

Legend

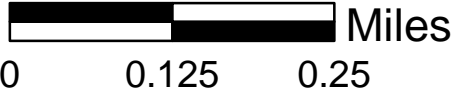
- Privately owned
- Town and Village of Canton owned
- St. Lawrence County owned
- Federally owned
- BOA Boundary

Town and Village of Canton, New York





Brownfield Opportunity Area Study Area

Map 7: Brownfield Opportunity Area Land Ownership





Legend

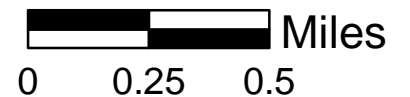
-  Brownfield Inventory
-  BOA Boundary

Town and Village of Canton, New York



Brownfield Opportunity Area Study Area

Map 8: Brownfield
Opportunity Area Brownfield,
Vacant and Underutilized Site
Inventory





Source: Esri, DigitalGlobe, GeoEye, Earthstar Geographics, CNES/Airbus DS, USDA, USGS, AeroGRID, IGN, and the GIS User Community



Source: Esri, DigitalGlobe, GeoEye, Earthstar Geographics, CNES/Airbus DS, USDA, USGS, AeroGRID, IGN, and the GIS User Community

Legend

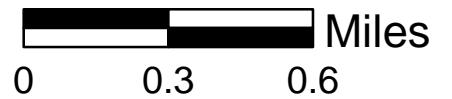
-  Parks, Trails and Open Space
-  BOA Boundary

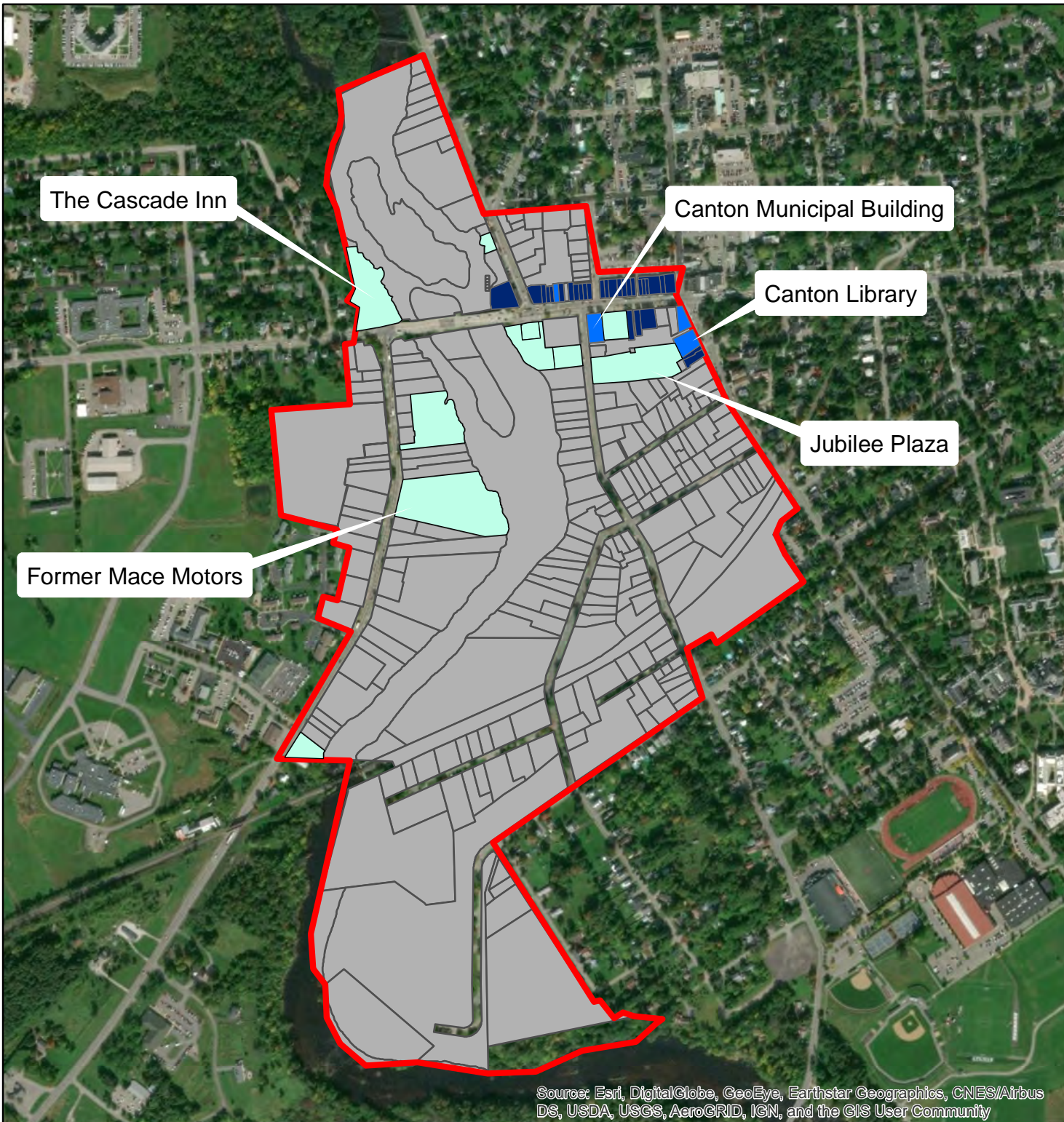
Town and Village of Canton, New York



Brownfield Opportunity Area Study Area

Map 9: Brownfield
Opportunity Area Parks,
Trails and Open Space





Legend

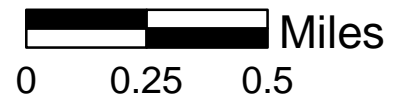
- Redevelopment Opportunities
- Community Services
- Historic Properties
- BOA Boundary

Town and Village of Canton, New York

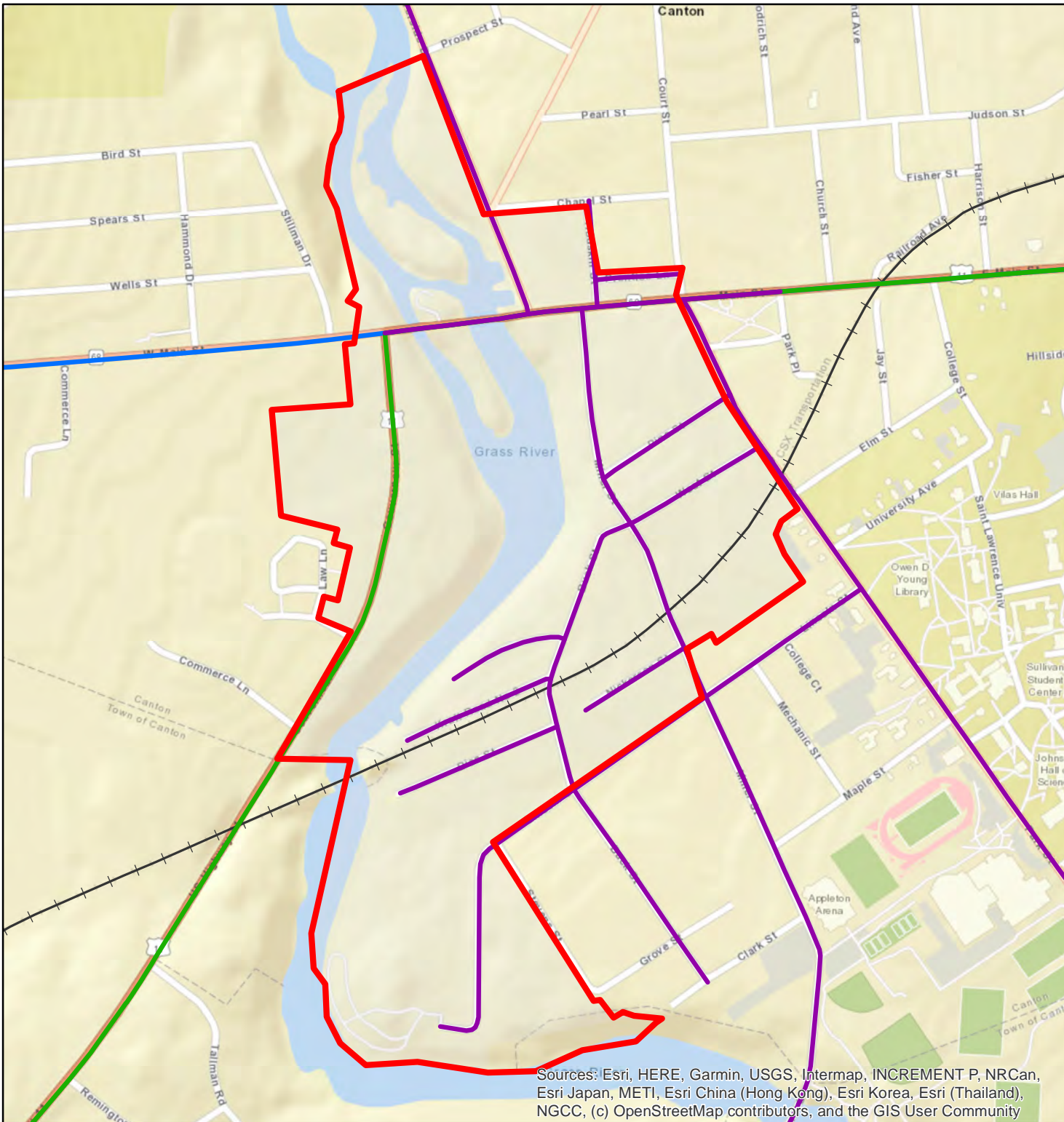


Brownfield Opportunity Area Study Area

Map 10 : Key Buildings









Source: Esri, DigitalGlobe, GeoEye, Earthstar Geographics, CNES/Airbus DS, USDA, USGS, AeroGRID, IGN, and the GIS User Community



Sources: Esri, HERE, Garmin, USGS, Intermap, INCREMENT P, NRCan, Esri Japan, METI, Esri China (Hong Kong), Esri Korea, Esri (Thailand), NGCC, (c) OpenStreetMap contributors, and the GIS User Community

Legend

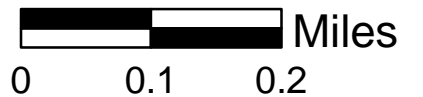
-  Local Roads
-  County Routes
-  State Routes
-  US Highway
-  Rail Road
-  BOA Boundary

Town and Village of Canton, New York



Brownfield Opportunity Area Study Area

Map 11: Brownfield Opportunity Area Transportation





Source: Esri, DigitalGlobe, GeoEye, Earthstar Geographics, CNES/Airbus DS, USDA, USGS, AeroGRID, IGN, and the GIS User Community

Legend

-  Grasse River
-  BOA Parcels
-  BOA Boundary

Town and Village of Canton, New York



Brownfield Opportunity Area Study Area

Map 12: Brownfield Opportunity Area Natural Resources

